

The Belleville Times

Vol. 75, No. 42

Second Class Postage Paid
At Newark, N.J. (USPS 049-220)

Thursday, September 20, 1984

Published
Every Thursday

35¢

THIS SATURDAY

Bucs Will Face Don Bosco High In Grid Opener

By Michael Lamberti

With the preseason contests now a thing of the past, the Belleville football team opens the 1984 regular season with a difficult assignment against Don Bosco on Saturday, starting at 1:30 p.m. Don Bosco is located in Ramsey, some 45 minutes from Belleville. The quickest and most direct route to the stadium is to take route 17 North to Ramsey. The stadium is located right off

the highway.

"We have a full week of practice now," said head coach John Senesky, somewhat relieved that the scrimmages are over and his team is injury free. "We can now fully concentrate on Don Bosco and we'll need all the time we can get. They (Don Bosco) are a very good team. They have an excellent quarterback, good receivers and can heat you in a number of ways."

In addition, Don Bosco is a defending state champion, having captured the Parochial "A" title last autumn. Certainly, this should be a solid test for the Buccaneers, a squad looking to improve on a 6-3 mark of 1983.

Offensively, Belleville appears ready. Mark Walsh returns at quarterback and will be joined in the backfield by Anthony Gizzo, Michael Gibbons and John Oliveri. Junior Sean Mulcahey and seniors Jim Caponi and Anthony La Bruzza should also see time in the backfield.

The offensive line appears to be the nucleus of the 1984 team. The guards are seniors John Apicella and Dominick Di Paolo. At tackle is Bob Mozeika and Steve Tribiana. The center is Ed Stangl. The players return with a year of varsity experience under their belt and should be a difficult assignment.

The tight end is senior Steve Kimble and the receivers are Gerald Kraus and Amro El-Helw. On defense, Senesky admits to some problems. "Our secondary, other than Walsh, will need some work," the coach said. "We've only had a couple of days in between scrimmages and haven't had much time to do a lot of things. Usually the offense is behind the defense at this stage of the season, but this year it might be the opposite. Our defense will need some work."

There are some quality players on the defensive line and at linebacker. Steve Kimble will see time at defensive end, Tribiana and Mozeika will play at guard, Gibbons starts at nose tackle and Gizzo, along with all county select-

School Population Seems To Be Leveling Off Here



School Five — Youngsters returning to classes at School Five after a long summer vacation were photographed by Times staff member Michele Jeannotte. As the new academic year began in Belleville there has been local concern about the declining rate of student enrollment in the public school system. However, school officials this week reported that the trend appears to be leveling off.

Kindergarten Enrollments Increasing

By Michelle Jeannotte

When the school year began two weeks ago, the Belleville school system was minus several teaching positions because of the decrease in student enrollment.

According to Superintendent of Schools Michael Nardiello, student enrollment figures have dropped from 4,392 in June to 4,263 as of September. As a result, five teaching positions at the elementary level, as well as one kindergarten position, and one position at the secondary level have been cut.

The school most affected by the decrease in student enrollment was the middle school, which fell from 702 students last June to 648 as of September. Next in line was the high school with an enrollment of 1,581 — a decrease of 46 students.

Although there has been a decrease in the public schools in past years, enrollment figures seem to be leveling off. At School 5, the two kindergarten classes this year have a total of 43 students — a comparative amount to those of the other grade levels.

At the elementary school level, School 5 was the most affected with a decrease of 29 students. Schools 4 and 8 followed, starting the school year with a drop of 20 and 15 students, respectively. School 9 also had a decline in enrollment with four.

Some schools, however, did have an increase in enrollment. They include School 7 with 16 students, School 3 with 14, and School 10 with nine.

According to Archibald Gallombardo, principal of School 5, the school's 1981-82 enrollment figures were similar to what they are now.

"Last year we figured were up slightly, but our 1981-82 figures were down around where we are now," he said. "Our sixth grade class last year had 57 students. This year it dropped to 40."

Each grade level usually has two classes, with an average class size of 17-26. When there is a fluctuation in enrollment, some grade levels may have three classes while others remain at two.

"Last year we had three second grade classes," he said. "But we had such a drop over the year, that we now have only two classes for that level."

At the same time, however, Gallombardo also noted that an increase in enrollment at the fourth grade level brought the number of classes from two to three.

"There are no empty classes here, that's for sure," said Gallombardo. "Our building is still full."

"Right now we don't have an exact figure, but it is a little higher this year because of the decrease in enrollment," he said.

Chamber Dinner Nov. 24

The Belleville Chamber of Commerce will honor some of the area's most prominent public figures at its 20th Annual Dinner Dance this year. The event will be held Saturday, Nov. 24 at the Branch Brook Manor, 13 Washington Ave.

Those to be honored include Grace Purdue, president of the Belleville Board of Education, and Essex County Sheriff Thomas D'Alessio. All will be honored for their services to the community and the surrounding area.

This promises to be one of the largest social gatherings of the Chamber of Commerce in recent years. The festivities begin at 7 p.m. with a cocktail hour and a smorgasbord followed by a prime ribs dinner. Dancing and entertainment will be provided by the Berkley's.

Tickets may be purchased at the Belleville Chamber of Commerce office at 155-A Washington Ave., or by mail. Tickets are \$40 each.

Commissioners Ban 24-Hour Stations

By Linda Telese

In a swift and easy move, commissioners last week gave a unanimous 5-0 vote to a measure that will prevent local gas stations from operating 24 hours.

The ordinance, first introduced last month, drew no opposition or public comment last week although in past weeks, both service station owners and neighbors of all-night businesses have urged commissioners to curtail the hours.

Under the current ordinance, gas stations may not operate between the hours of midnight and 6 a.m.

The issue grew out of recent decision by the Shell Oil Company to force their two township stations, both on Belleville Avenue, to stay open 24 hours.

The proprietors appealed in past meetings to township officials to put an end to the extended hours. They argued the amount of business conducted after midnight did not compensate

them for the operating and personnel costs incurred. Also, they complained of being at a greater risk of crime and vandalism if forced to remain open those hours.

Township officials sympathized with their complaints and agreed with some. Mayor Michael Marotti said previously, "We don't need 24-hour gas stations. They invite trouble and cause noise for area residents nearby."

The recent decision was a relief for the station owners. Ricky Ricciardi, owner of Ricky's Shell on Belleville Avenue, commented after last Tuesday's session, "I'm glad they voted to close us. It just wasn't worth staying open."

Ricciardi, who has owned the station for 14 years, said the Shell Company instituted the 24-hour schedule last December by making it a condition for the renewal of the station's lease.

Also applauding the decision was Frank Rysel, the Essex County field representative for the New Jersey Gasoline Retailers Association.

"We feel the 24-hour schedule is a hardship on the dealer and an unnecessary disturbance to the area residents," said Rysel after the meeting.

Although the Shell Company last summer wrote a letter of objection to the township when the action against the 24-hour businesses was proposed, no objections were voiced during last week's public hearing.

Also Mayor Marotti and other officials anticipated a legal battle from Shell, but to date, there has been no formal action to protest (Please see "Gas Stations" on page eight)

Milk Supply Distribution Next Week

Distribution of federal surplus dry milk will be held on Friday, Sept. 28 for eligible Belleville residents who are currently included in various income and health services. The announcement was made by Carol Ann Russo, Belleville's welfare director, who pointed out that the distribution would start at 4 p.m. at the Department of Public Affairs, 383 Washington Ave.

Those who apply for the surplus milk must have proper identification showing their inclusion in one of the aid programs. That includes supplemental security income (SSI), general assistance (GA), N.J. health services program (Medicaid), Aid to Families with Dependent Children (AFDC), Women, Infant and Children Nutritional Program (WIC), Food Stamp Plan (FSP), or Lifeline Receipt.

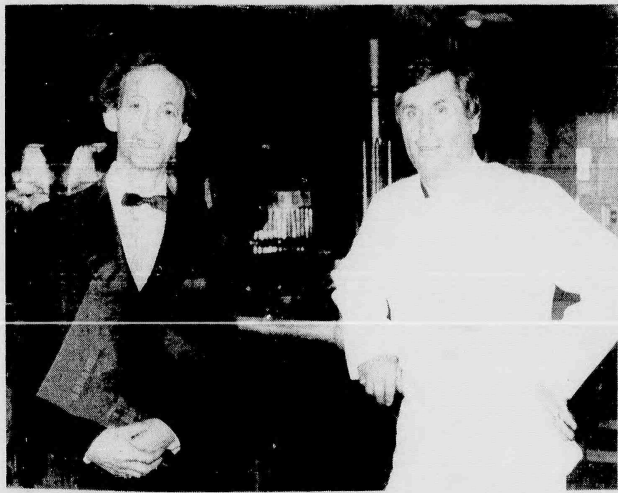
Pre-registration forms for the surplus milk distribution will be available at the Municipal Welfare Department between 9 a.m. to 2 p.m. beginning on Monday, Sept. 24 through Thursday, Sept. 27.

Guidelines for income eligibility range from one to eight members, as follows: 1 — yearly income of \$9,213 and monthly of \$768; 2 — \$12,432 annual income and monthly of \$1,036; 3 — \$15,651 and monthly \$1,305; 4 —

(Please see "Surplus Milk" on page 9)

(Please see "Grid Season" on page seven)

'Armando Di Villa' Is Coming



New Owners — Onofrio Pellegrini (left) and Armando Cotumaccio will relocate the famous "Armando Di Villa" restaurant in Nutley, with a grand opening slated for Sept. 28. The restaurant, which will occupy the building at 800 Bloomfield Ave., earned a reputation as one of the finest Italian restaurants in N.J. during its years in West New York.

Famous 4-Star Restaurant Re-Locating Soon

One of the most highly-rated restaurants in the New York Metropolitan area is relocating here later this month in a venture that includes the sale of Frank Orechio's Nutley Manor at 800 Bloomfield Avenue.

The restaurant, Armando Di Villa — rated three stars by the New York Times and four stars by a long list of others — will relocate from its present West New York location to Nutley by the end of this month.

"We are moving for larger quarters, a much prettier surrounding and to be more convenient for our patrons," Onofrio Pellegrini, a native of Bari, Italy and today a much celebrated maitre d', said.

Pellegrini's business partner and chef is Armando Cotumaccio. They worked together for the first time in the United States at the well-known Alfredo's on Central Park West in Manhattan. Armando was the chef, and Onofrio the maitre d' who even at that time had attracted the individual atten-

(Please see "Highly-Rated" on Page 4)

'Brown Water' Stays With Us

Commissioner Joseph A. Grande, director of the Department of Public Works, expressed "great concern and consternation" with regard to the enormous increase of brown water being delivered by the City of Newark to Belleville Township.

A meeting was held with Daniel Berardelli, manager of the Newark Water and Sewer Utility, who indicated there does not seem to be any immediate way to alleviate the present condition due to the availability of funds.

However, should the New

Jersey legislature pass a proposed bill allowing a public water supplier to enter into a contract with a private company to construct, operate and maintain water treatment plants, construction of such facility could be started by the spring of 1985. A similar bill has already been passed for sewerage treatment plants.

Commissioner Grande said he is "very sorry for all this inconvenience you are experiencing, but I will keep trying to alleviate this problem."

Andrew Ciriaco of Belleville GOP's Candidate for Register

Andrew Ciriaco of Belleville, a clean house in the register's office if elected. Acknowledging that the office he seeks is one of the least known and least understood departments in county govern-

ment, Ciriaco charged that the current incumbent is one of the major reasons for such anonymity.

"The Office of Register, recorder of deeds and mortgages, is the largest revenue generating department in the county. What this department needs is a register who will speak out and articulate the department's role as well as address the issues which concern all residents of Essex County. It also needs to be modernized and made to operate more efficiently. My opponent has been on the job 10 years now and unfortunately has been unable to do any of these. It is time for a change in the register's office and time for a new voice in Essex County."

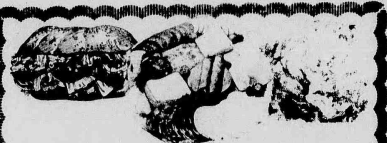
Ciriaco, 30, who resides in Belleville with his wife Joanne, grew up in Fairfield and attended West Essex High School. After graduating with a bachelor's degree in accounting from Wake Forest University, Ciriaco worked in New York City insurance companies for eight years. He has served as an accounting officer in two of the companies he has worked for.

Frank Goglia At Convention

Representing Belleville at the 1984 national convention of the 9,000,000-member Disabled American Veterans (DAV) in Washington, D.C., was Frank Goglia, DAV N.J. Amputee Chapter of New Jersey.

He was among some 4,500 delegates, family members, and guests who convened at the Sheraton Washington Hotel for the largest DAV and Auxiliary convention in the 64-year-old organization's history. There Goglia participated in planning the DAV's activities for the coming year. During the convention, major emphasis was placed on securing improved benefits and services for America's 2.5 million disabled veterans in the areas of disability compensation, health care, education, employment opportunities and training.

Major speakers at the convention included Senator Alan Simpson (R-Wyo.) and Congressman G.V. "Sonny" Montgomery (D-Miss.), chairman of the Congressional Committees on Veterans' Affairs; Harry N. Walters, chief of the Veterans Administration; Donald J. Devine, director of the U.S. Office of Personnel Management; and other high-ranking government officials. Vice President Bush addressed the Opening Session.



Thur. Fri. Sat. Sun. Mon. Specials
September 20 thru September 24

1/2 lb. HOT JEWISH
CORNED BEEF \$2²⁸

(1 Fresh Barrel Pickle 39¢
(w/Corned Beef Special only)

1/2 lb. KRAKUS IMPORTED
POLISH HAM \$1⁷⁹

1/2 lb. FINLANDIA IMPORTED
SWISS CHEESE \$1⁷⁹

1/2 lb. HORMEL DiLUSSO
GENOA SALAMI \$2²⁸

Have Lunch With Us...
Free Coffee With Lunch 11:30a.m.-2:30p.m.
Open 7 days a week till 10:00 P.M.

Towne 751-3935
**DELICATESSEN
& CATERERS**
650 JORALEMON ST.
Cor. Franklin Ave., Belleville
Member of Belleville Chamber of Commerce

Belleville Rotary Has Study to Philippines

By Bill Gwuer

The Belleville Rotary Club is sponsoring a group study exchange program for the Philippines. This unique person-to-person program offers young businessmen a chance to study the institutions and ways of life in the Republic of the Philippines which has had a long relationship with the United States.

The Philippines was a territorial possession of the United States for many years following the Spanish American War. At the start of World War II, President Franklin D. Roosevelt pledged independence to the Philippines, a promise that was kept. Today the Asian Republic is one of the most influential political and economic states in the region.

Applications for this once in a lifetime experience can be obtained by contacting Neal Clarke, 5 Avon Terrace, Succasunna, N.J. 07876. Applicants must be between the ages of 25 and 35, been in their chosen profession full time for two years. Deadline for applications is Oct. 12.

The travel grants apply to paired Rotary Districts throughout the world. In the late

winter of 1985, District 747 will send a team consisting of a Rotarian who will be the team leader and five non Rotary members to District 385 in the Philippines. For six weeks, the team will live in the homes of Rotarians and travel extensively throughout the country.

GREGORY S. CORSO, D. D. S.

Announces the opening of his office for
the general practice of Dentistry

at

66 CENTER STREET
off of Joralemon Street
BELLEVILLE, N. J. 07109

Office Hours
By Appointment

Telephone
(201) 751-4251

Another DeCarlo Listing!



Glen Ridge Colonial

Features large screened front porch, large entrance foyer, living room, dining room with fireplace, mod eat in kit, laundry rm. on 1st, 4 bedrooms, full bath on 2nd, 1 bedroom on 3rd, 2 car gar. Walk to schools. \$138,000. Listed by David J. DeCarlo.

Ann DeCarlo

AGENCY/REALTOR
880 BROAD ST., BROOKDALE, BLOOMFIELD
748-5288 David DeCarlo



WORLD PREMIERE!
Tue. SEPT. 25
thru Sun. OCT. 7

★ PERFORMANCES ★

ALL TICKETS HALF-PRICE!
WPIX-TV FAMILY NIGHT

Tue. SEPT. 25	7:30PM
Wed. SEPT. 26	7:30PM†
Thu. SEPT. 27	7:30PM†
Fri. SEPT. 28	1:30PM†...7:30PM†
Sat. SEPT. 29	10:30AM†...2:30PM...7:30PM
Sun. SEPT. 30	1:00PM...5:00PM
Wed. OCT. 3	7:30PM†
Thu. OCT. 4	7:30PM†
Fri. OCT. 5	7:30PM†
Sat. OCT. 6	10:30AM†...2:30PM...7:30PM
Sun. OCT. 7	1:00PM...5:00PM

†SAVE \$2.50 On Kids Under 12!

***** YOUR BEST *****

ENTERTAINMENT VALUE!

ALL SEATS RESERVED

\$6.50 - \$8.50 - \$9.50 - \$10.50

NO INCREASE IN PRICES!

**2 WAYS TO GET
YOUR TICKETS**

IN PERSON: MADISON SQUARE GARDEN BOX OFFICE and All Ticket Outlets including Most Sam Goody Stores, Kelly Film World Express, Drug Fair Stores and TSS Seedmans. For Location Nearest You: (212) 888-9000

BY PHONE: (212) 888-9000 Daily 10 AM to 6 PM • Major Credit Cards Accepted (a \$1.00 Ticket Service Charge on Phone Orders)

Information: (212) 564-4400
Group Rates: (212) 563-8080

madison square garden

HOLIDAY ON ICE

Pharmacy Footnotes



**Vincent
Cozzarelli
Reg. Ph.**

ASPIRIN SUBSTITUTE
Because it lacks many of the side effects produced by aspirin, "acetaminophen" is gaining popularity as a common household pain reliever. However, there is a growing concern about the public's lack of awareness of its toxicity. Acetaminophen has been shown to be harmful to the liver where it is broken down, and destroyed. However, the problem occurs only when very high doses are taken. Eight 500 mg. capsules, taken daily, does not cause any apparent harm. However, twelve to fourteen 500 mg. doses, taken daily can cause such toxic reactions as nausea and vomiting, loss of appetite and stomach pain. There is also evidence of liver damage and jaundice within two to four days. Obviously, people with chronic liver conditions must be careful when using acetaminophen.

Our pharmacist is available to answer your questions on all types of medication. Let us help you with all your needs at ROS-SMORE PHARMACY, 338 Washington Ave., 759-1956, 759-1968. Walkers, wheel chairs, crutches, canes and other convalescent aids are available for sale or rent. We also have a gift department and a full line of greeting cards. Open: Daily 9am-10pm, Sundays 9am-9pm.

HANDY HINT:
Even aspirin may be harmful if taken in very high doses.

30-YEAR FIXED TERM RESIDENTIAL MORTGAGES AVAILABLE MODERATE INTEREST RATES

First DeWitt Savings offers these moderate rate mortgages on one-family to four-family owner occupied homes.

Also, available at moderate rates are 30-year adjustable rate mortgages.

For details contact our Mortgage Department at 751-2800.



**First DeWitt
Savings** AND LOAN ASSOCIATION



BELLEVILLE • BLOOMFIELD • CEDAR GROVE • HOPATCONG
MAIN OFFICE: 463 Washington Ave. Belleville • BLOOMFIELD CENTER OFFICE: 666 Bloomfield Ave. Bloomfield
BROOKDALE OFFICE: Broad St. & Walchburg Ave. Bloomfield • CEDAR GROVE BRANCH: 532 Pompton Ave. Cedar Grove
FOREST HILL OFFICE: 60 Belleville Ave. Bloomfield • HOPATCONG OFFICE: Branch Ave. & Hopatcong Rd.
WATKISS OFFICE: 20 Watkiss Ave. Bloomfield

751-2800
IN HOPATCONG CALL 398-0900

Sessions Resume Smoothly At Belleville Middle School

Opening week at Belleville Middle School went smoothly. The seventh and eighth graders found their homerooms without too much difficulty and followed their schedules without too many problems.

Along with the students, most of the middle school faculty returned with a few of the teachers changing positions. Mrs. Patriano, a special education aide last year, is now the secretary in the guidance department. Mr. Catrambone, a former science teacher, has been vice principal of the middle school since December. Mrs. Campione replaced him and has returned to teach seventh grade science. She has five years of teaching experience and has taught in the Lyndhurst Public School System. Mrs. Campione is a graduate of

Felician College in Lodi. In the Physical Education Department, Mr. Mc Tigue, a former student teacher, replaces Mrs. Forina who has been transferred to the high school. A graduate from Seton Hall University in 1984, he is certified in health/physical education and recreation and has supervised activities at the Belleville Friendly House since 1978.

Returning to the middle school from the high school is Mrs. Fazzari. She is resuming her position as the home economics teacher. In addition, Mrs. Valerie Puzio, a special education teacher, and Mrs. Russo, an SCE teacher, both transferred from the high school to the middle school. Mr. Scanzillo, formerly taught at School 5 and is teaching computer literacy courses for grades 7 and 8. Miss

Davis's resource room students have a new aide, Mrs. Adessa, who last year worked in a similar position at School 4.

Joining the faculty for the first time are Mrs. Zisa and Mr. Silvera. Mrs. Zisa has six years of teaching experience. She has taught in District 9 in the South Bronx, Griffin, Ga., and Vernon, N.J. Last year she was a graduate assistant in the Jersey City State Reading Department where she

earned her master's in reading. Mr. Silvera, a first-year teacher, graduated from William Paterson College with a B.A. and certification in mathematics K-12.

Administrators, faculty, secretaries, and the custodians are all looking forward to a successful year.

Parents are reminded to note that "Back to School Night" is scheduled for Oct. 17, from 7-9:30 p.m.



New Law on Textbooks — Acting Governor Carmen Orechio, serving as New Jersey's chief executive while Gov. Thomas Kean attends the Republican Convention in Dallas, not only has been performing ceremonial functions but signing key legislative bills. Orechio, who is president of the N.J. Senate and a Nutley commissioner, poses with Sen. Richard Van Wagner (D-Middletown), who sponsored a new law permitting public school districts to purchase and loan textbooks for handicapped pupils in non-public schools. Orechio has signed eight bills during his current reign as acting governor.

COUPON

FREE SQUARE DANCE

Bring Your Family and Friends To This Fun Open House
Mon., September 24, 8:00-10:00

Held At The **Nutley Public Safety Bldg. (Police Dept.)**
228 Chestnut St. Nutley

Additional lessons will continue every Monday following, with a **PROFESSIONAL CALLER**
Elli Toul, at \$2.50 per lesson. For Information
call Jan 661-0591 or Norris 759-0864
Sponsored by Nutley's Own COVERED BRIDGE SQUARES



**Carmines Restaurant
& Cocktail Lounge**

Now Appearing: September 21 and 22
THE PLAYBOYS
with **Jimmy Toppeta and Eddie Ventura**

Homemade Italian Cuisine Specializing in Seafood
Lunch and Dinner Served Daily
Businessman Luncheon Specials Daily

Open 10 am - 2 am - Monday-Saturday
12 pm - 2 am Sunday
Catering For All Occasions
● Discounts Available For Funerals

Reservations Required

118 Franklin Ave., Nutley, N.J.
661-4333 661-4306

Plaza

men's store

Proudly Presents
Carmine Milici
(formerly of JNC The Men's Store Nutley)
And His

**Fall Collection From
These Famous Designers**
Christian Dior
Lanvin
Adolfo
Thomas Anthony
Oleg Casini
Countess Mara
Dimitri

plus many, many, more
Expert European Tailoring Done On Premises

Plaza Shopping Center
363 Franklin Ave.
Belleville 759-0019

Hours: Mon.-Fri. 9:30-9 Tues.-Sat. 9:30-6
Visa MasterCard & American Express Accepted

**FREE OR
REDUCED
RATES
AVAILABLE**



\$295
From

Ships: Regency, Norway

**Your 3, 4, Or 7-night Cruise
On America's Favorite Cruise Line
Starts With A Phone Call:**

Only Norwegian Caribbean Lines gives you so much to do, and takes you so far, for so little money.

The world's largest cruise ship, the S/S Norway surrounds you with the glamour of Broadway and Vegas as she cruises majestically to St. Thomas and Nassau.

The M/S Skyward, M/S Southward and M/S Starward take you on a weeks tour of exotic places like Ocho Rios, San Juan, Cancun, Grand Cayman and Cozumel.

And our 1 and 7-night Bahamarian cruises on the M/S Seward II give you a short week or long weekend escape.

All NCL ships (except the Southward) go to a private Out Island.

For the itinerary, price and schedule that's right for you, call us today and let yourself go!

*Per person, double occupancy. From \$295 to \$3,000. Airfare restrictions apply.

NORWEGIAN CARIBBEAN LINES®
America's Favorite Cruise Line™

Attend Our CRUISE NIGHT
Thursday, Sept. 20, 1984
249 Franklin Ave., Nutley
Begins at 7 P.M.

Prize of \$100 certificate given to winner towards any cruise.

For further information please call Dorothy Meo,
Manager of Cruise Department at 284-0900

PATRIKIAN TRAVEL INC.
249 Franklin Ave.
Nutley, N.J. 07110
201-284-0900

**Three Eligible
For Millionaire**

Three Belleville residents are among the finalists in the New Jersey Lottery's grand prize millionaire drawing next Tuesday.


The local finalists for the "money tree" instant game are Maurice Cennamo, Bruce W. Dacey and Emilio Peito.

The winner will be selected in ceremonies set for 12:15 p.m. Tuesday in the Sands Hotel-Casino in Atlantic City.

Lottery Executive Director Hazel Frank told The Belleville Times the finalists represent 20

Trivia Fans

**I
BET
YOU
DIDN'T
KNOW**



Brought to you
By Bigelow Motors
Chrysler Plymouth

Questions:

1. What are the world's three largest oceans, in order of size?
2. What singer was known as Mr. C-2?
3. What does C.A.R.E. stand for?
4. What's the common name for acetylcholinesterase?
5. What Tchaikovsky ballet do Red Riding Hood and Cinderella appear in?

I bet you didn't know... that this is the time to save on a new car at Bigelow Motors. We also have a good selection of used cars. Come in and see for yourself.

Answers:
1. The Pacific, Atlantic, Indian.
2. Perry Como.
3. Cooperative for American Relief Everywhere.
4. Aspirin.
5. Sleeping Beauty.

Bigelow Motors
Chrysler Plymouth
50 Washington Ave.
Belleville 759-4220

NOW

**is the best time
to Call
the KINGS MEN!**



LAWN KING ANNUAL PROGRAM

1. Balanced Fertilization Broadleaf Weed Control Fungus Control Chinch Bug Control Sod Webworm Control Grass Control (Liquid)	2. Power Aeration Thatch Rolling Balanced Fertilization Broadleaf Weed Control Fungus Control Sod Webworm Control P-T-Element Grass Control (Liquid) Pre-Emergent	3. Balanced Fertilization Broadleaf Weed Control Fungus Control Chinch Bug Control Sod Webworm Control Mulleins, Microinsects Grass Control (Liquid) Pre-Emergent	4. Power Aeration & Rolling Balanced Fertilization Broadleaf Weed Control Fungus Control Post Emergent Grass Control (Liquid) Pre-Emergent	5. Balanced Fertilization Extra Heavy Rate Pre-Emergent
--	---	--	--	---

We are chemical applicators, not miracle workers. We know what your lawn needs and when it needs it. What you see in the program, is what you get. Top quality chemicals and seed — only the best — that's all we use. There's no such thing as specially formulated for drought.

Aeration, seed and lime are part of our program. Fungus control and grub control have always been part of our program — not options at extra cost when you need them. By the time you know you need them it's too late anyway. No slopes please. If we can't aerate twice a year we can't help you.

OPTIONAL PREPARATORY SERVICE

Double Power Aeration Double Power Rolling Double Weed Control	Balanced Fertilization Fungus Control Grub Control (Granular)
--	---

1¢ PER SQUARE FOOT (min. 3,000 sq. ft.)



Lawn King

SQUARE FOOTAGE	COST PER SERVICE	TOTAL ANNUAL COST
3,000	27.80	138.00
4,000	32.20	161.00
5,000	35.80	184.00
6,000	41.40	207.00
7,000	46.30	241.50
Each additional 1,000 sq. ft.		34.90

Prices vary from Dealer to Dealer

LAWN GONE?

Time to Call...

Lawn King

Free Estimates

Of Nutley, Belleville & Bloomfield
743-1025

with this coupon

\$10.00 OFF or 5% (Whichever is greater)

On Your First Year's Service (Minimum 3,000 sq. ft.)

(This coupon good for customer who has used service with new customers only)

The Belleville Times

Serving Belleville Since 1909
Published Every Thursday
At 151A Washington Ave.
Belleville, N.J. 07109

Phone 759-3200

Publisher
FRANK A. ORECHIO

Annual Subscription
\$12.00
Senior Citizens
\$7.00

Belleville Parade

A Columbus Day Parade Committee headed by Public Works Commissioner Joseph A. Grande is busy with preparations to participate in its second Columbus Day Parade — a joint effort by Nutley-Belleville Americans of Italian decent.

The parade will be held on October 7 and is expected to draw thousands of people participating in the parade and thousands more viewing it as it leaves the Belleville Municipal Stadium.

Ethnic pride is what it's all

about. We urge all Americans to participate in this event which is so directly related to the discovery of our indestructible democracy. Fun, patriotism and ethnic pride will be the order of the day. Enjoy it.

Frank A. Orechio

Federal Budget

For a couple of years, we have been bombarded with claims that a constitutional amendment mandating a federal balanced budget is necessary to bring an end to disastrous \$200 billion deficits.

The balanced budget constitutional amendment is a poney.

It is hypocritical for the President, U.S. Senators, members of Congress and candidates for any of these national offices to demand a balanced budget constitutional amendment to eliminate our enormous national deficit when all they need do is to promise that never again will they vote to increase the national debt. As for the President, he should promise that he will never again ask for legislation, and sign legislation that increases our national debt.

The national debt limit is established by federal law — a process that begins with the President asking the Congress to increase the debt limit and ends with the President who signs the legislation.

We believe the balanced budget amendment sponsors misled the public. Ladies and gentlemen — all we need is a commitment from our President, our members of Congress and the U.S. Senate that they will maintain the national debt limit at its present level, period. Thus we will insure a balanced budget.

Frank A. Orechio

Belleville Business

By Hoard Halpern

The Belleville Chamber of Commerce will be presenting its 20th Annual Dinner Dance on November 24 at the Branch Brook Manor, 13 Washington Avenue, Belleville. Established 35 years ago, the Branch Brook Manor has become a landmark in Belleville. Originally starting as a bar and small restaurant, owners John and Frank Carpel expanded their facilities into a beautiful catering and banquet hall which can accommodate numerous affairs, testimonials for dignitaries, organizations, governor's breakfast, town officials, etc. The Carpels are especially proud of their wedding receptions, which features a "Bridal Staircase" from which the bride descends with all of her majesty beauty. The cocktail hour accents a delightful smorgasbord with tasty morsels from all over the globe. The entrée of your choice may vary from prime rib to seafood. Special dishes can be prepared for individuals with particular diets. The restaurant portion of the Manor is open for dinner daily, specializing in Sizzling Steak platters. The head chef is Mr. Soto a 14 year veteran.

Newark German Hospital was founded in 1868. It's German doctors decreed from the start that no prejudice would be shown to any patient because of race, creed, or nationality. The German hospital pioneered in many areas of medicine particularly in the field of antiseptic surgery. Because of anti-German sentiment during WWI the hospital changed its name to Newark Memorial and later in 1946 was taken over by The Lutherans and called Lutheran Memorial Hospital.

Newark German Hospital was a dedicated nurse who won a nursing pin and cap back in 1895 and in 1898 became head nurse at the age of 21. Three years later she offered her life in yellow fever experiments conducted in Cuba to prove that yellow fever was transmitted by mosquitoes. She volunteered to be bitten, came down with the fever and died on August 24, 1901. It wasn't until the late 1940's when this lady began to gain fame. Magazine articles, radio shows, and a TV feature recalled her bravery. Cuba issued a stamp in her honor. Then in 1976 the US Postal Service issued a commemorative stamp in her name. In 1958 the hospital moved to an area called "Nanny Goat Hill" overlooking the beautiful cherry blossoms in Branch Brook Park. Clara Maass Hospital named after Clara Louise Maass was only 25 when she died (1876-1901) but the legacy that she left will never be forgotten.

On September 5, the Chamber of Commerce represented Belleville at a welcoming luncheon for The New York Jets upon their "Triumphphant" arrival to the Meadowlands. Approximately 600 people attended, including the media and major TV networks. Comments and introductions were made by Spencer Ross of WABC, Jim Kensil, Jets President, and Joe Walton, Head Coach. All of the Jets' players were there except for Mark Gastineau. Dressed in business suits and ties, they looked like ordinary regular gentlemen, except for one major distinction, their necks seemed to be missing. We met 6'4" 269 lbs NO. 70, lineman Stan Waldemere, whose home town is Belleville and was All American at Essex Catholic High School.

michael lamberti's BUC SHOTS

Young Booters Are Looking Good



The Belleville Soccer Association is now in full gear and the youngsters are performing quite well in the early going.

The Belleville Breakers made it two in a row with an 8-0 whitewash of St. Peter's. St. Peter's is sponsored by Modern Millwork, Inc. Dennis Dework and Mike Janicelli had four goals and two goals, respectively. Other league winners included the Kings, sponsored by De Bacco Brothers. The Kings were impressive with a 6-0 rout of Harrison. Anthony Matos had two goals in that contest.

The Belleville Flash posted a 7-0 victory over St. Peter's with Mike Capasso and Mike Citarella each scoring three goals. The Arrows, sponsored by For Pete's Sake, tied with St. Peter's at one apiece.

The American's, sponsored by People's Bank, lost a tough 2-1 decision to Hoboken. The Blast, Sting and Kicks were also on the short end of games to some solid competition from Hudson County. The Belleville Bandits, featuring the youngest players in the league, lost to Parsippany by a 4-0 tally despite 15 saves from goalie Antonio Raimo. The Bandits feature players in the 6- and 7-year age brackets.

Any 9-nine-year-old, interested in joining the traveling soccer league should contact either Frank Koch at 751-6579 or Bob Dorey at 751-6962.

The Belleville tennis team is off to a 1-1 start after blanking Paterson Eastside, 5-0 and losing by the same count to powerful Montclair. The girls battled a very good team from Immaculate Heart yesterday and will take part in the county championships this afternoon, starting at 10 a.m. Tomorrow, the girls will host Passaic, starting at 4 p.m.

Head coach Karen Fuccello is happy with the play of her squad in the early going. "We have to play with more consistency," the coach said, "however, I'm happy with the attitude of the team and the enthusiasm. We're working on our approach shots and trying to cut down on the unforced errors."

The coach stayed with the same lineup for the first two matches, but hinted at some changes as the season progressed. At first singles is senior

Cheri Tillman. A four year player, Tillman should do well at the number one position. She is a tough player with a good eye for the net. Tillman should provide the girls with the stability needed at a very difficult position.

At second singles is junior Desiree Johansen. The all purpose athlete did a good job in the 1983 season and has been impressive in the early going this year. The third singles position is currently occupied by Janet Reiman. Reiman saw extensive action last year and should fit in well this fall.

The first doubles team consists of Mary Kudrack, a senior, and Jackie Tillman, a freshman. Kudrack has been playing tennis now for four years and should be a big help at a critical position. Tillman, Cheri's younger sister, has shown promise in the early going and has a bright future in store.

At second doubles is Lori Tirrell and Patty Scali. All told, 12 athletes tried out for the squad this fall. Tammy McQueen, Dena Demedici, Lisa Apruzzese, Susan Scofi and Adrianna Puentes round out the 1984 team.

Fuccello suggested some lineup changes late this season that could see Jackie Tillman at third singles and Reiman teaming with Kudrack at first doubles. Those moves, however, are speculative and could change. In the meantime, Belleville will look to rebound from a sub .500 season in 1983 and will face a schedule that will provide a better type of competition than that of last season when the opponents were generally Bergen County powerhouses with too much experience and power for the younger Belleville players.

For the Belleville cross country team, head coach John Tosato is very optimistic about his boys squad, and admits a major rebuilding job is in store for his girls team. The boys return an experienced crew that could win some meets this fall. Returning to the cinders this year are seniors Bob Hutchinson and Bill Huamani and sophomore Craig Burden. Last year, Hutchinson attended track camp and made a strong showing in the autumn. This summer, "Hutch" attended camp at Bucknell University once more and appears to be

gearing for a big season.

Burden is coming off a very impressive freshman season. His times on the home course, which is now located at Nutley Park, were sharp and last spring, his mile and two mile times were well above his coach's expectations. Huamani, a second year runner, showed a great deal of improvement during the 1983-84 season and will add a great deal of valuable points.

"We are looking for a good season from our top three runners," Tosato said. "The boys are looking forward to the season. We're happy to be back in the (Essex-Passaic) NNJIL and competing with Bloomfield, Nutley and Passaic. We'd like to get a few more people out for the team and will be working toward that goal in the next few weeks."

Junior Joe Di Vincenzo and sophomore John Zurlo round out the starting five. Di Vincenzo, a sprinter during the track season, is using the cross country campaign to prepare for the indoor track season. Zurlo has some good talent and will be counted on to score some critical points that will be necessary to capture those close meets.

The girls team is paced by four freshmen and one sophomore. The freshmen are Rachel Aiello, Ellen Kempki, Cathy Lima and Joyce Luongo while the sophomore is Donna Lee Daudelin.

Hopefully, we'll start weekly coverage of the Belleville soccer team in next week's edition. Unfortunately, we have been extremely limited in sports space for The Belleville Times. The hope is that, the situation will be remedied in the not too distant future and we can once again give you weekly coverage of all your favorite sports. Please bear with us.

For this week's quiz, in the 1981 Major League baseball season, a strike out into a good portion of the season. When the season resumed, the divisional races were split with playoffs for divisional titles set for the end of the season. Name those matchups and the outcomes.

Highly-Rated Armando's Moving to Nutley Park

(Continued from page one)

tion of the N.Y. Times for his skill in preparing dishes tableside.

The Nutley Manor will close this Saturday night and remain closed most of next week. Armando Di Villa will open here for the first time Friday, Sept. 28 but reservations are no longer available for that particular night.

"We strongly recommend reservations, especially for the dinner hour," Onofrio said. Reservations are already being accepted by telephone (667-8899) for evenings starting Saturday, Sept. 29.

Armando Di Villa will be open for lunch 11:30-2:30 Monday to Friday, and for dinner 5-10 p.m. Monday-Thursday, and to 11 p.m. on Fridays and Saturdays. The cocktail lounge, which will feature piano entertainment on weekends, will be open throughout the afternoon and evening. Jackets are required.

Minor alterations are being made at the Nutley site next week in preparations for the re-opening.

Both Onofrio and Armando say they have "no doubt whatsoever" that they can transfer the quality of food and service" which has won the Armando Di Villa reviews that elevate the restaurant as one of the finest in the country.

"I have found no better Italian restaurant in the Tri-State region than Armando Di Villa," writes John Mariani for Cue Magazine.

The New York Times reviewer, B. H. Fussell, suggested Armando's "may become a model of classic Italian cuisine" and found no fault except for its "problems of space." The Times

awarded Armando Di Villa three stars.

New Jersey Monthly's John Gottfried said he had never been to a better restaurant than Armando's and awarded "four stars and a bravissimo" to the West New York "gem." But, noted New Jersey Monthly, the restaurant was crowded, and its decor "a bit sterile."

With no qualms from anyone about quality of food or service, Onofrio and Armando said they now have answered the single criticism involving tightly-spaced tables and space.

"Here in Nutley, we will have all the space we need and the service will be evf better," Onofrio promised as he re-inspected the main dining room overlooking Nichols Park.

Armando hastened to add that the unusually large kitchen here would make his culinary work more efficient "and the food more delicious than ever before."

Onofrio as matre d' personally greets and seats every guest who most often have made reservations in advance.

"Because we know our customers, we know that our coming to Nutley will be more convenient to nearly everyone," he said.

Back in 1979, a year after Armando Di Villa had opened in West New York, a baffled restaurant reviewer from the Bergen Record awarded the four stars, but wondered aloud why "Onofrio and Armando chose an old working-class town without

parking facilities to open their restaurant."

Before coming to America, Armando was a chef in Rome, Venice, Florence and at the Carlton Hotel in Johannesburg. Before becoming the chef at Alfredo on Central Park West, he had worked at L'Aiglon in New York City, and at the Villa Pira on Long Island.

Onofrio worked as head waiter and maitre d' with Armando for eight years at Alfredo. Before that, Onofrio worked at Giambelli in New York and in Genoa and Milan where he was a waiter at Aldo's at the young age of 19.

Armando and Onofrio had a dream while working together at Alfredo's in New York, and that dream was to own the best Italian restaurant in the world.

Cue Magazine's John Mariani, suggests that their dream is close to coming true. Mariani told Cue readers, "The owners, Onofrio and Armando, are from Genoa and they refuse to crank out the same tired clichés of Italian-American cookery; instead, they offer a menu that is original, varied and inspired by a European professionalism that shows both in the kitchen and in the service."

Although closed to the public on Sundays, the new Armando Di Villa will be available for private parties including weddings.

During the week, parties of 10 to 70 persons may be arranged. The new owners will honor all contracts for parties previously arranged by the Nutley Manor.

Armando Di Villa accepts all major credit cards.

Albert Monagas, 56; Was Visiting Bahamas

Funeral services were held Aug. 7 for Albert Monagas, 56, who died Aug. 1 while in the Bahamas. Mr. Monagas was a machinist with the Sillocks Miller Co.

The husband of Helen Venckus Monagas, he came to Belleville 33 years ago from Jersey City.

The funeral was held from the Levandoski Funeral Home, Bloomfield, with services in St. Valentine's Church. Burial was at the Holy Cross Mausoleum, North Arlington.

Surviving, besides his wife, are two sons, Anthony of California, and Michael of Wenonah, and his

parents, Mr. and Mrs. Albert Monagas of Nutley.

Gertrude Schuster; Former Resident

Mrs. Gertrude Schuster, 91, of Middletown died Sept. 12 in the Riverview Hospital, Red Bank.

A Mass was offered Friday in St. Peter's Church, Belleville. Born in Belleville, Mrs. Schuster moved to Middletown seven years ago.

Surviving are a grandchild and three great-grandchildren.

Ann Cummings; Hairdresser

A Mass for Mrs. Ann C. Cummings, 82, of Belleville was offered Saturday in Holy Family Church, Nutley.

Mrs. Cummings died Sept. 12 in the Clara Maass Medical Center, Belleville.

She was a hairdresser at Mitchell's Salon, Newark, for more than 30 years before retiring in 1974.

Born in Newark, she moved to Belleville 32 years ago.

Surviving are two sons, James F. Jr., and Richard D.; seven grandchildren and two great-grandchildren.

Obituaries

Robert McCabe, 67; Security Guard at RCA

A Mass for Robert A. McCabe, 67, of Belleville was offered yesterday in St. Peter's Church, Belleville.

Mr. McCabe died Saturday in St. Michael's Medical Center, Newark.

He was a security guard for the RCA Corp. of Harrison for 40 years before retiring in 1980. Mr. McCabe was a member of the Essex County and Belleville Senior Citizens and the Old Guard of Belleville.

Dewey R. Tatz, Sr.; Supervisor at Tiffany's

A Mass for Dewey R. Tatz, Sr., 86, a lifelong resident of Belleville, was offered Sept. 19 in the St. Catherine of Siena Church, Cedar Grove.

Mr. Tatz died Sept. 15 in the Mountsides Hospital, Glen Ridge.

He worked for the Tiffany Jewelry Co. of Newark for 50 years before retiring as a supervisor in 1970.

Surviving are three sons, Dewey R. Jr., Charles and William; a daughter, Mrs. Madeline Martin; a sister, Mrs. Florence Warley; 15 grandchildren and 16 great-grandchildren.

Emil Glentzlin Head Mechanic

Emil Glentzlin, a longtime resident of Belleville, died Aug. 28 at the Clara Maass Medical Center at the age of 72.

The husband of Beatrice Glentzlin, he was born in France and came to the United States 56 years ago. Mr. Glentzlin resided in Montclair and Kearny before coming to Belleville 38 years ago.

He retired nine years ago as head mechanic with the Congoleum Nairn Co., Kearny. He had been with the firm 40 years.

Surviving, besides his wife, are a daughter, Miss Brenda E., at home, and a sister, Mrs. Mildred Ruocco of Montclair.

BELLEVILLE SHOES

Tremendous Sidewalk Sale Values

Select Women's Shoes 1/2 Price

Plus Many Others To Choose From

September 20th, 21st, & 22nd

Thurs. Fri. Sat.
9:30-6 9-9 9:30-6

Shop Early For Best Selection

BELLEVILLE SHOES

151 WASHINGTON AVE. BELLEVILLE, N. J.

759-4555

PARKING NEXT TO TOWN HALL



Kenneth Specht

Kenneth L. Specht, 71, of Pembroke Pines, Fla., formerly of New Jersey, died Aug. 28 in the Pembroke Pines General Hospital. Services were held Sept. 1 in Florida.

Mr. Specht owned and operated the Rockaway Shell Service Station for 13 years before retiring six years ago.

Born in Belleville, he moved from Rockaway to Florida in 1982.

Surviving are his wife, Eloise; a son, David; and two brothers, Floyd and Clifford.

**Phase II
Now Open As Of
June 10th**

**Featuring
SOLAR
ROOM**

**Immediate
Occupancy!**

Condominiums

**STARTING \$70,000
AT**

Low Monthly Maintenance Fee Starting at \$49.88

All below items included in price:

- 5 Acres Recreation-Park-Like Setting
- Club House approx. 4,000 sq. ft.
- Health Club
- Saunas, Hot Tubs
- Tennis Courts, platform and regular
- Large size pool
- Spacious insulated solar room
- Central A/C Heating
- Full Basements
- Side by Side Refrigerator/Freezer
- Dishwasher, Washer/Dryer
- Conventional/Microwave Oven
- Wall to Wall Carpeting
- Nature Walks & Gazebo

Models open for inspection 10 to 8

Rolling Hills of Andover

222 McPeak Road, Andover Office 383-0874

DIRECTIONS: Rt. 10 West to Exit 25. Proceed to 204 North 7 miles to Limecrest Road. Turn approximately 4 miles to models. Adjacent to Andover Nursing Home.

ESSEX REPLACEMENT DOOR & WINDOW CO.

419 Broad Street, Bloomfield, 743-8603

SUPPORT YOUR LOCAL MERCHANT

<p>25% OFF</p> <p>Scatlon Aluminum Awning</p>	<p>20% OFF</p> <p>Scatlon Porch Enclosure</p>	<p>\$50.00 OFF</p> <p>Garage Doors Wood Aluminum Or Steel</p>	<p>FREE</p> <p>Deadbolt Lock With Any Door Purchase</p>	<p>\$75.00 OFF</p> <p>Scatlon Steel Clad Replacement Door</p>	<p>\$50.00 OFF</p> <p>Screen And Storm Doors Scatlon Solid Core</p>	<p>\$25.00 OFF</p> <p>Vinyl Or Aluminum Replacement And Storm Windows</p>
--	--	--	--	--	--	--

Rate Breaking NEWS!

Money Market

9.97%

Effective Annual Yield On

9.55%

Minimum Deposit \$2,500

Six Month CD

12.09%

Effective Annual Yield On

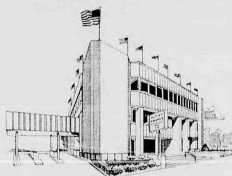
11.75%

Minimum Deposit \$2,500

Whether your investment needs call for instant access with high interest or short and long term guaranteed interest, we have a plan for you. Six different CD terms ranging from 3 to 42 months are now available. Terms of 12 months or longer require only a \$500 minimum deposit and pay today's highest market rates, including a high yield of 12.75% for our 42 month certificate of deposit.

If you're looking to lock in today's best rates, stop in or call Nutley Savings at 661-3200. When it comes to rates... we've got what it takes.

*Money Market Account interest is compounded and credited monthly. Six Month CD Accounts earn simple interest. There is a substantial penalty for early withdrawal from certificate accounts.
Rates shown are as of publication date and are subject to change.



Nutley Savings

AND LOAN ASSOCIATION
member FSUC

MAIN OFFICE:
371 Franklin Avenue, Nutley, N.J. 07110 • Phone: 661-3200
BRANCH OFFICE:
221 Washington Street, Newark, N.J. 07102 • Phone: 623-7090

Some Things Just Can't Be Imitated...

- * Delicious Food
- * Fabulous Service
- * Special Breakfast Menu
- * All Baking Done On Premises
- Open 24 Hours — Plenty of Free Parking
Seven Days A Week**

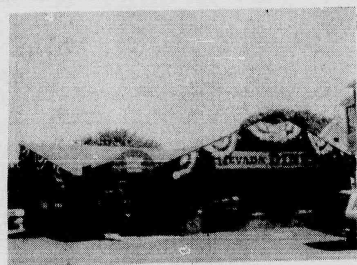
We Appreciate Your Patronage

NEVADA DINER RESTAURANT

293 BROAD STREET

BLOOMFIELD 743-9393

AFFILIATED ONLY WITH STATE LINE DINER
RT. 17, MAHWAH, N.J. & NEVADA DINER, BLFD.





Rosemary Liberti — Thomas Graziano

Rosemary Liberti Will Wed Thomas Graziano Next Year

Mrs. P. Van Hall of Belleville and T.R. Liberti of West Orange announce the engagement of their daughter, Rosemary, to Thomas Samuel Graziano, son of Mr. and Mrs. Samuel Graziano of Belleville.

The wedding will be held Oct. 5, 1985.

Miss Liberti, an alumna of Capri Institute of Hair Design, is with Belleville Haircutters.

Mr. Graziano is employed by Blue Cross/Blue Shield, Newark and also attends school for computer programming.



Umberto's Corner

Dear Umberto, I read your answer to a letter I sent you a week or so ago in regard to my marriage. I was working in a new shop. A lady would not give me a permanent which I did. At the time she told me that she was on medication. In fact, she was not permanent. Two weeks later she came back, claiming that she was on medication but it was a new kind of medicine. She told me that she was on medication. She wanted me to have her a wig. Your Worried Reader

Dear Umberto, I read your answer to a letter I sent you a week or so ago in regard to my marriage. I was working in a new shop. A lady would not give me a permanent which I did. At the time she told me that she was on medication. In fact, she was not permanent. Two weeks later she came back, claiming that she was on medication but it was a new kind of medicine. She told me that she was on medication. She wanted me to have her a wig. Your Worried Reader

UMBERTO OF NAPLES
547 Washington Ave.
Hair Cutting & Collure
549 Washington Ave.
Unisex Extension
Haircutters
Belleville, N.J.
FREE PARKING
759-4900
OPEN SUNDAYS

CAMEO OPTICS

BUY 1 PAIR GET 1 FREE

380 Main St., Belleville
Grand Union Shopping Center
751-4600

DEBBIE McCANN'S
School of Dancing

667-2725

287 Franklin Ave., Nutley
"Specialized Instruction
Of The Young Dancer"
Pre School Through Adult

Jazz • Tap • Ballet • Pointe
Acrobatics • Floor Exercises
Hawaiian • Tahitian • Aerobics
Day & Evening Classes

Scholarships Available
Member of Dance Educators of America
Graduate of Their Training School
Competitive Dance Group
Runners Up Dance Educator Competition
Finalists - Garden State Talent Expo
Registration Now Thru Sept. 10 Call For Details

Stork Club

Lisa N. Arlotta

A second child, a daughter, Lisa Nicole, was born to Capt. and Mrs. Donald Arlotta of Clarksville, Tenn. July 27. Birth weight was six pounds, 12 ounces. She joins Eric.

Mrs. Arlotta is the former Carol Mazzitelle, daughter of Mr. and Mrs. Frank Mazzitelle of Belleville. Capt. Arlotta is the son of Mrs. Nettie Arlotta and the late Mr. Dominick Arlotta.

Thomas M. Mariano

A first child, a son, Thomas Matthew, was born to Mr. and Mrs. Thomas Michael Mariano of 12 Berkeley Ave. Aug. 27 at Clara Maass Medical Center, Belleville. Birth weight was six pounds, 10 ounces.

Mrs. Mariano is the former Susan Ruth Cassel, daughter of Elizabeth A. Argust of Willingboro and Richard M. Cassel

of Cranbury. She is in product implementation at Fidelity Union Bank/FNS, North Brunswick. Mr. Mariano, son of Mr. and Mrs. Michael J. Mariano of Rutherford, is a biochemist at Roche Institute of Molecular Biology, Nutley.

Michael L. Dean

A fourth child, a son, Michael Leonard, was born to Mr. and Mrs. Leonard Dean of Middletown, formerly of Belleville, Aug. 29 at Clara Maass Medical Center, Belleville. Birth weight was five pounds, 10 ounces. He joins Kara Ann, eight, Jaclyn, seven and Andrea, five.

Mrs. Dean is the former Maryann DeMarco, daughter of Mr. and Mrs. Frank DeMarco of New Rochelle, N.Y. Mr. Dean, son of Mr. and Mrs. Leonard Dean Sr. of Bloomfield, is an executive.



Mr. and Mrs. Angelo Palma — nee Patricia Vincent

Clara Maass Dinner Dance Set for Oct. 6

The Clara Maass Medical Center Guild has slated its annual dinner dance for Oct. 6 at The Short Hills Caterers, Short Hills. Cocktails will begin at 7:30 p.m. with dinner at 8:30 p.m. Supplication rate for the fund raiser is \$80 per person.

Mrs. Libby Gerardo of Livingston, vice president of the Clara Maass Guild, is chairperson. Assisting her is Mrs. Nellie Lima of Nutley, Guild president. All proceeds will benefit the Clara Maass Medical Center Cancer Treatment Center.

For further information on tickets and reservations, contact the Clara Maass administrative offices at 450-2020.

Patricia Vincent, Angelo Palma Wed

Patricia Vincent, daughter of Mr. and Mrs. Pat Vincent of Belleville, was married June 30 to Angelo Palma Jr., son of Mr. and Mrs. Angelo Palma of Bloomfield.

The ceremony was performed in the Wayne Manor chapel by the Rev. Daniel Gaeta of Montclair. A reception followed.

Given in marriage by her parents, the bride wore a white organza gown fashioned with full puff sleeves, bodice trimmed in Venice lace and silk flowers and chapel train. A lace and pearl crown held her veil and she carried red and white roses, stephanotis and orchids.

Lisa Vincent was her sister's maid of honor. Bridesmaids included Rosanne Palma and Anna Marie Cruz of Bloomfield and Corinne Paglio of Belleville, sisters of the groom. Carol Ricca of Newark and Judy Falcone of Belleville.

They were in red tea length embroidered organza gowns with puff sleeves and peplum waistline. They wore matching hats and carried white long stemmed roses and babies breath.

Vincent Palma of Bloomfield served his brother as best man. Ushering were Anthony Vincent of Belleville, brother of the bride,

Julio Cruz of Bloomfield and Ronald Paglio of Belleville, brothers-in-law of the groom, and David Gaeta and Jay Bennett of Montclair, cousins of the bride.

Mrs. Vincent chose a pink silk chiffon gown with a matching capelet accented with rhinestones. Her wristlet was of pink roses and white miniature carnations. The groom's mother, in a tiered lavender silk chiffon gown, wore a wristlet of lavender miniature carnations and white roses.

Mrs. Palma is an alumna of Belleville High School and a summa cum laude graduate of Montclair State College with a degree in family/child studies and early childhood teacher certification.

Mr. Palma, an alumnus of Bloomfield High School, attended William Paterson College and is self-employed as a tile contractor. The couple honeymooned in Hawaii and have made their home in Belleville.

Guarinos Celebrate 50 Years

Vito and Rose Guarino of 60 Magnolia St. celebrated their 50th wedding anniversary Sept. 1 at a surprise party in their honor at the Seven Hills Restaurant, Bloomfield.

Mr. Guarino and the former Rose Urcinoli were married in St. Michael's Church, Newark. They have two daughters, Mrs. Angela Amorosi and Mrs. Linda D'Alessio, three grandchildren, Mrs. Debra DePaul, Jerry D'Alessio II and Vito D'Alessio and one great grandchild, Steven DePaul.

Draijer-O'Neill Troth Is Told; May Wedding

The engagement of Miss Yvonne Draijer, daughter of Mr. and Mrs. Jack Draijer of Hazlet, is announced to Timothy J. O'Neill, son of Mr. and Mrs. Frank J. O'Neill of Belleville.

Miss Draijer is a graduate of Raritan High School and Taylor Business Institute, Plainfield. She is manager of marketing services at Strategic Medical Communications, Cranford.

Her fiancé is a graduate of Essex Catholic High School, Newark. Providence (R.I.) College and Rutgers University Law School, Camden. He is an attorney with the U.S. Justice Dept. A May 1985 wedding is planned.

Day of Devotion To Blessed Mother At St. Anthony's

The Rosary Altar Society of St. Anthony's Church is sponsoring a special day of devotion to the Blessed Mother this Sunday at the church on Franklin Street.

Devotions will begin with the noon Mass and end at 7 p.m. with the benediction. The tribute to the Blessed Mother is in celebration of her 2000th birthday. The public is invited to join members of the Society by visiting the church and participating in the recitation of the rosary and/or private meditation.

Quit Smoking Program Set At Clara Maass

The Clara Maass Medical Center recreation therapy department, in collaboration with the Essex County Unit, American Cancer Society, will be conducting a Fresh Start Quit Smoking program at the Medical Center. The program consists of four one-hour sessions to be held Oct. 2, 9, 16 and 23 from 8 to 9 p.m.

Topics to be discussed include, "Understanding Why and How," "Managing the First Few Days," "Mastering Obstacles" and "Enjoying It Forever." The only cost



Homeless — This lovely Belleville husky has been at the Associated Humane Societies, 124 Evergreen Ave., Newark, since April. She needs a home. Please call the Society at 824-7080 and refer to File 150078 (Newark). The Society, located just off Rts. 1 and 9 near Newark International Airport, is open seven days a week.

for the program is a \$5 refundable incentive fee made payable to the American Cancer Society.

For further information and registration, call Robert Califano, director of recreation therapy at Clara Maass, at 450-2177. Class size is limited.

EXPERT ALTERATIONS

Now Available on
Fine Men's Clothing

Plaza
men's store

Plaza Shopping Center
363 Franklin Ave.
Belleville
759-0019

Hours: Mon. & Fri. 9:30-9:00
Tues. thru Sat. 9:30-6:00
American Express, Visa & MasterCard

HEALTH WISE

By Ralph J. DiMaio D.C.

Chiropractic deals primarily with the spine because any misalignment of spinal vertebrae may cause the nerve system to malfunction. The nerve system is the most important system of the body. It controls, through the flow of nerve energy, all other systems and organs.

Any interference with this flow, such as when a vertebral misalignment impinges upon a nerve, may result in trouble in that part of the body controlled by that nerve. Ill health and possibly pain results.

Chiropractic is aimed at locating and correcting the cause of ill health. Phone today.

DR. RALPH J. DI MAIO
Chiropractor
625 Jorammon St.
Belleville 751-8805



On Exhibit — The works of Belleville artist Rita Safer are on exhibit this month at the Belleville Public Library, J.M. Turner inspired Safer with his use of diffused light and the misty quality of his landscapes and she has been achieving the same kind of look using palette knives instead of brushes. The exhibit can be viewed during library hours.

Introductory Offer:
Francine, formerly of
Everything Is Hair
has joined our staff at
FASHION CURL
547 Valley Road
Upper Montclair 744-9699

Coupon

10% OFF
All Services With This Coupon
(Offer Expires 9/29/84)

Coupon

Belleville Garbage Contract Award Challenged

By Linda Telesco
Belleville's garbage collection company refuses to be discarded. When the township recently won legal permission to award a five-year contract to another firm with a better price, Browning-Ferris Waste Industries of Fairfield (B-FI) went to court to fight the move.

According to Township Attorney Frank Zinna, BFI, which

has been Belleville's scavenger since January 1983, went to the Appellate Division of Superior Court seeking a stay of the Aug. 21 decision by Judge Paul Murphy in Newark that permitted Belleville to award a new contract to a firm that failed, apparently, to meet requirements set down in the township's contract specifications.

A day after Judge Murphy's decision, Belleville awarded a five-year \$3.4 million contract to Haul-Away Inc. of Hoboken — slated to go into effect Sept. 12.

Prior to the legal opinion, the township officials were prepared to reject the bid, though economical, because the firm failed to provide an affidavit of non-collusion with its original bid on Aug. 6.

The document, which company officials said was omitted accidentally, was submitted the following day. Haul-Away officials argued the one-day delay was immaterial.

However, township officials, on the advice of the municipal attorney, cautiously decided to reject the entire deal and rebid the contract.

Mayor Michael Marotti and the other commissioners feared another unsuccessful legal battle like the one that developed last year when the township awarded a five-year contract to BFI even though that firm did not submit required documents until several days after original bids were opened.

Both then and now, the township — seeking an economical deal — went to court to argue the point that the omission was immaterial.

Though the argument failed to hold in court in 1983, Judge Murphy in this case, agreed with Belleville and granted the township permission to award the contract to the Hoboken firm, the lower of the two bidders competing at the Aug. 6 meeting.

BFI, the unsuccessful bidder, sought a stay of Judge Murphy's decision. Attorney Zinna said the Appellate Division refused to grant the stay because "they were not a party to the action," but they did permit the scavenger firm to file its own complaint. A hearing is slated for Oct. 2.

Meantime, BFI, which had a one-year contract with Belleville until Sept. 10, was ordered to continue service to the township at a

daily rate of pay based on the last contract amount of \$598,425.

Meantime, Zinna and officials of Haul-Away took their case to state Supreme Court Judge Sidney M. Schreiber seeking a decision to overrule the stay won by BFI termed "improper" by the municipal attorney.

Zinna said Judge Schreiber advised to permit the Oct. 2 hearing given the "intriguing" nature of the matter.

According to Zinna, there is no case law on the matter of affidavit of non-collusion. "There is a question, raised by BFI, whether the municipality is legally able to waive its own requirements in bid specifications that ask for the affidavit at the time of the bid opening," he explained.

The attorney noted that Belleville has been in court in two separate cases involving the same matter and receiving conflicting opinions from the lower court.

When the township fought to maintain the five-year contract awarded to BFI in December 1982, Judge Richard Newman declared the contract void because the firm failed to submit the documents on time.

After several appeals and rebidding sessions, Belleville settled on a one-year contract with the firm.

In the current matter, Judge Murphy's decision appears to contradict Judge Newman's as to whether the omission of a required document at the hour of bidding is a material objection, particularly if the information is provided soon after.

According to Zinna, the unusual nature of the matter

prompted Judge Schreiber to suggest taking up the matter with the full state Supreme Court.

Attorneys for both BFI and Haul-Away were unavailable for comment this week.

Arnold Schonmuller, M.D.

announces the opening of
his office
for the practice of Cardiology
and Internal Medicine
242 Washington Avenue
Nutley, N.J. 07110

Office Hours
By Appointment

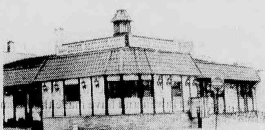
201-284-1444

Dino's Palace Saloon
30 Stepsles
472-2213

Friday, Sept. 21, 1984
Miss N. J. 1984 Go-Go Contest
10 of the Best Looking Girls in
N. J. Come on! The girls need
your vote

WE'RE OPEN 7 NITES A WEEK!
Free Admission With This Ad

The Choice of the People



7 Days
24 Hours
Delicious
Salad Bar!
Italian
Specialties!
Steaks & Chops

All baking done on premises • Homemade pastries
Children's Menu Available

Special Breakfast Menu: 6-11 a.m.
Daily Businessman's Lunch: 11 a.m.-3 p.m. Salad Bar Open 11 a.m.-10 p.m.
AIA CART and COMPLETE DINNER MENU

We're Always Open

WILLIE'S
DINER-RESTAURANT

9 State St., Bloomfield Call 748-7414

Don't wait for a problem
to get your family's eyes checked.



PEARLE
vision center

You get your teeth checked regularly. And with or full, remember
to get your kids' teeth checked. But most people don't take care of
their family's eyes until there's a problem.

The truth is, your eyes can change in a matter of months. That's why a
regular eye exam is so important. It helps keep your eyesight sharp. And it
can correct a little problem before it becomes a big one.

August Is Family Eye Care Month At Pearle.

At Pearle we care enough about your eyes to make every August a Family Eye Care Month.
In our area, we'll extend our special family eye exam to \$10.00. And to help you
remember your checkups, we'll give you The Family Health Record and booklet.

So we'll always be on top of your dental appointments, physicals, and even on your
wellness care.

After all, there are so many reasons to check your eyes. And at Pearle,
Make sure you're seeing them the way they're meant to be seen.

Nobody cares for eyes more than Pearle.

\$10 OFF

BACK TO SCHOOL DISCOUNT
\$10 OFF
ALL STUDENTS!

We now have tinted Contact Lenses
STOP IN FOR DETAILS TODAY
Dr. Stuart M. Schiffman, O.D., P.A. Optometrist
100 Passaic Ave., Kearny
at ShopRite Plaza • 997-0888 • 991-5080
Visa, MasterCard, Medicaid Accepted, Senior Citizen Discounts

Grid Season's First Game This Saturday

(Continued from page one)

tion Walsh, will be in the backfield. The linebacking position has Di Paolo, Apicella, Dave Long, Bob Charles and Andy Martinez looking for time.

It will be an experienced team that Belleville sends to Ramsey this weekend, but time will tell whether this club can handle such a difficult schedule as the one that has been presented to them this year.

You've heard us on WCBZ
and WINS Radio

5 minutes
via
Rte. 21
Belleville/
Nutley

YOU can get
the great
deals on

HONDA
PONTIAC
VOLVO

or
that have brought hundreds
of people from ALL OVER
the Tri-State area

City
Motors
River Drive, at Rte. 21, Passaic Park
777-1600

Open
7 Days
7am - 9pm

BILL TONE'S
Specializing In Home Cooked Dinners
Catering For All Occasions

PASTA
• Spaghetti
• Ravioli
• Stuffed Shells
• Manicotti
• Cavatelli & Bucatini
• Linguini With Garlic & Olive Oil
• Linguini: Also Bill Tone's

Hot & Cold Sandwiches • Salads •

DINNERS
• Eggplant Parmigiano
• Chicken Parmigiano
• Chicken Cacciatore
• Chicken Scampi
• Chicken in Wine Sauce
• Chicken Murphy
• Chicken Francese
• Chicken Parmigiano
• Chicken Cacciatore
• Shrimp Scampi
• Shrimp Parmigiano

Coming Soon: Ice Pirates, Firestarter, Bolero, Bounty, Empire Strikes Back, 16 Candles

Instant Video
186 Main Avenue
Passaic Park • 778-4751

Open Daily till 9 p.m.

FALL BRINGS A SEASON ON SAVINGS

AT
Mace Bros

Fine Furniture

SAVE LIKE NEVER BEFORE
ON IN STOCK MERCHANDISE
VALUES SUCH AS

RECLINERS

\$129⁰⁰ AND UP

SOFAS

\$299⁰⁰ AND UP

Complete BEDROOM

WITH ONE NIGHT STAND

\$699⁰⁰ AND UP

Complete DINING ROOM

WITH SIX CHAIRS

\$1199⁰⁰ AND UP

BEDDING 3/3

MATTRESS & BOX SPRINGS

\$69⁰⁰ EACH

* FREE DELIVERY
* FREE IN HOME SET UP

SHOP FOR LESS... SHOP FOR THE BEST

AT... **Mace Bros**

MASTERCARD, VISA,
FINANCING AVAILABLE

512 KEARNY AVE. KEARNY, NJ

(201) 998-0300

Gas Stations Asked For 24-Hour Ban

(Continued from page one)

In a related matter, a group of citizens attended last week's meeting to complain about the disturbance created by a Garden State Farms store which operates 24 hours in the Silver Lake area.

A district leader from the Lake, Marie Gammaro submitted to the township a petition hearing, she said, some 100 names of area residents who want the store closed after midnight.

"There is too much noise and

crime at that spot after hours," said Gammaro, who previously led a successful local protest against the 24-hour schedule of the Silver Lake Pathmark supermarket.

Another district leader, Larry Cuomo, said the GSF store became a nuisance hangout, and apparent drug dealing spot during late night hours.

"This is a working class neighborhood," said Cuomo. "These people don't need their sleep disturbed or their children

bothered by an all-night store."

The leader also contended that the 24-hour schedule was unnecessary for the neighborhood store since most nearby residents did not shop there after midnight anyway.

Public Safety Commissioner Ralph DiRuggiero promised some immediate relief to the residents. "We'll have police patrolling the area and try to keep it as quiet as possible while we study Marie's request (to cut the hours)," he said.

Commissioner Michael Pizzi, before casting his favorable vote to prohibit all-night service stations, remarked he wanted to see similar restrictions imposed on all local stores.

"I'm totally in favor of this ordinance and would like to see it extended to stores like the ones these people are complaining about," said the commissioner who lives only a few feet from a similar 24-hour convenience store, and said he can "see the problems neighbors face."



do it right

Leave the servicing to us...

AIR CONDITIONING • Brake Specialists • Electronic Tune Ups • Tires - Wheel Balancing • INSPECTION


OVER 25 YEARS EXPERIENCE

N.I.A.S.E. Certified Automotive Technician

OL' BETSY AUTO REPAIR

504 Washington Avenue, Belleville - 759-5561

MASTERCARD and VISA ACCEPTED



We're fighting for your life.

American Heart Association

2 For The Price of 1

SEAFOOD SUPREME

Served Friday 5-8 p.m.
Saturday 5-7 p.m. - Sun. 1-6 p.m.

LOBSTER • SHRIMP
CLAMS • MUSSELS
APPETIZER & SALAD BAR

2 for 1... \$17⁹⁵

Entertainment This Weekend Saturday

JACK CHIELLO
Sun. THE GONDOLIERS

DON'S "21"
RESTAURANT

McCarter Highway & Bridge St., Newark
Single Five Parking

DENTALLY SPEAKING
By Drs. James D. Muglia and Paul N. De Maio

Mrs. O. of Nutley writes. Now that school has started what dental advice can you give?

Mrs. O. much can be written on that but we'll highlight some points:

1. Brushing should be done before school, after school, and before bed. Flossing should be done daily.
2. Good nutritious food should be eaten as snacks during school. Foods such as fresh fruits, grain breads for sandwiches, portions of raw or cooked vegetables, peanuts, popcorn or crackers.
3. Remember during school stressful situations may occur (exams, homework etc) which could result in bleeding and painful gums. If that should occur reinforcing the points above is mandatory along with seeking advice from your dentist immediately. We hope that helps you somewhat Mrs. O. and thanks for writing.

Please send inquiries to:

Dentally Speaking
671 Franklin Avenue
Nutley, N.J. 07110

NEW EXEROBICS II
by Lucia & Elaine
Formerly of Daniels Studios

OFFERING:

- Aerobics and Slimnastics
- Large Air-Conditioned Room
- Flexible Scheduling
- Original Material
- Every Session

Registration:

- 9-17 to 9-21 Mon.-Fri.
- 9-24 to 9-25 Mon.-Tues.
- 6:30 p.m. to 9:00 p.m.
- Classes begin Oct. 1, 1984

Prices (8 Weekly Sessions)

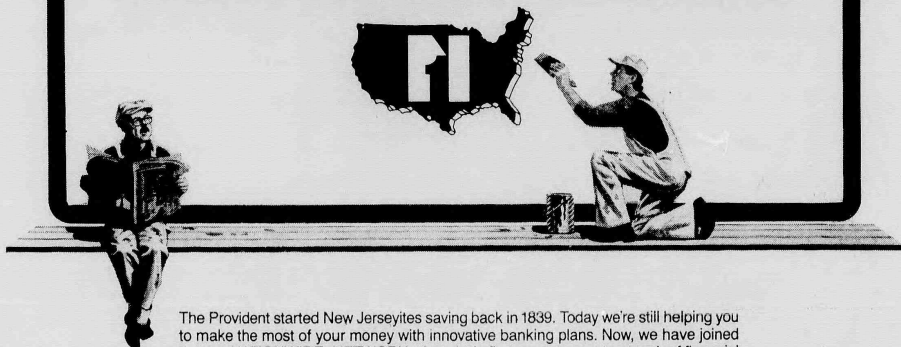
- One class per week \$3.50
- Two classes per week \$3.25
- 3 or more \$2.40

Scheduling Arranged At Time Of Registration

Temple B'Nai Israel
192 Centre St., Nutley
627-3166
or 470-8759

WE DECIDED TO BRING YOU EVEN MORE CONVENIENT AND PROFITABLE OPPORTUNITIES TO HANDLE YOUR BANKING AND PERSONAL FINANCES

SO WE JOINED THE 1st NATIONWIDE NETWORK



The Provident started New Jerseyites saving back in 1839. Today we're still helping you to make the most of your money with innovative banking plans. Now, we have joined the 1st NATIONWIDE NETWORK, America's first coast to coast network of financial institutions and, as a Provident customer, you can enjoy today's most imaginative and satisfying banking services. Here are a few:

- ☐ Check cashing and Automated Teller Machines throughout the United States.
- ☐ Money Action Plan—a confidential and professional analysis of your assets to reach your goals.
- ☐ High interest returns on a variety of Money Market, savings and investment accounts.
- ☐ NEIE Discount Brokerage savings on your equity and bond trades.
- ☐ Home Equity line of credit.
- ☐ Personal, auto and home improvement installment loans including a revolving personal line of credit.
- ☐ Business banking services.

Please drop in at your Provident office soon. We want to tell you how The Provident, your own community bank, and the 1st Nationwide Network can help you to build a sound, bright financial future.

PROVIDENT SAVINGS BANK. THE OLD BEEHIVE. JUST THINK OF US AS



THE PROVIDENT
SAVINGS BANK

Offices throughout New Jersey • Member FDIC

Equal Housing Lender

Equal Opportunity Lender

MEMBER OF THE 1st NATIONWIDE NETWORK

THERE'S A PROVIDENT OFFICE NEAR YOU IN NEW JERSEY: Bayonne—464 Ave. C; 569 Broadway; Belleville—208 Washington Ave.; Bloomfield—11 Broad St.; 1260 Broad St.; 100 Bloomfield Ave.; Burlington Township—Rte. 130 & LaGore Blvd.; Cherry Hill—Clover Shopping Center; Collingswood—1040 Haddon Ave.; Dumont—21 Washington Ave.; Dunellen—333 North Ave.; East Windsor—Rte. 130 & Dutch Neck Rd.; Green Brook—930 North Washington Ave.; Jersey City—239 Washington St.; 533 Bergen Ave.; 350 Communipaw Ave.; 1553 Kennedy Blvd.; 3670 Kennedy Blvd.; 696 Bergen Ave.; Leonia—320 Broad Ave.; Maple Shade—Rte. 40 & Lenoita Rd.; Mount Holly—40 High St.; Northvale—246 Livingston St.; Ocean Township—197 Seaview Square Mall; Point Pleasant Beach—636 Arnold Ave.; Red Bank—73 Broad St.; Teaneck—464 Cedar Lane; Union City—3720 Bergenline Ave.; West New York—5410 Bergenline Ave.; 200 60th St.; 6222 Bergenline Ave.; Westwood—162 Westwood Ave.; Willingboro—666 Beverly-Rancocas Rds. (*—Drive In Banking)

Heard at Ringside

By Steve H. Frank

America's highly publicized gold medalist Mark Breland, who was booed by the crowd at the Olympic Games, agreed with this writer and foreign boxers for complaining about the Olympic judges favoring the American fighters. On ABC's "Good Morning America," the Brooklyn welterweight said, "Some of the American fighters, that scored 5-0, should have been 3-2."

Heavyweight Tony "T.N.T." Tucker of Grand Rapids, Mich. continued on the winning trail by knocking Eddie "Animal" Lopez of Los Angeles for a loop in the 9th-round of their Pier-Sixer. Tucker had a slight edge on the judges score cards when the end came for the awkward, wild-swinging Lopez came rushing in. Tucker now sports a record of 24-0 with 23 K.O.'s. Lopez has a 22-4-2 with 13 K.O.'s to his credit.

If Michael Spinks of Philadelphia successfully defends his world light-heavyweight crown when he squares off with Dwight Mohammad Qawi (Dwight Braxton) of Camden, N.J., he may take on Carlos "Sugar" De Leon of Puerto Rico when he (Spinks) steps up in weight. De Leon recently raised his record to 37-2-1 by taking a 12-round unanimous decision over Bash Ali, 24-8, in Ali's hometown of Oakland, Calif.

Lightweight Luis Vega of Reading, Pa. is probably the poorest excuse we have seen in the ring during our many years in boxing. He doesn't know how to throw a punch and defense is a unknown word in his vocabulary. Vega is a punching bag, a catcher of every punch coming his way — on the nose. Boxing commissions should bar him from fighting in their state for his own safety. For his future well-being Vega should enter another trade.

Shelly Finkel, welterweight Mark Breland's advisor-financier, announced the gold-medalist will make his pro debut at Madison Square Garden for \$200,000. Also a deal with ABC-TV for 4-fights at \$1 million is reportedly signed.

Anthony Pillitteri, former junior welterweight champion, was born Nov. 11, 1917, in Garfield, N.J. He started his boxing trade as Tippy Larken in 1925 an activity which lasted 17 years. He fought in 151 bouts, winning 137, losing 13 and fought one draw. Tippy battled seven world champions and sold out Madison Square Garden for each of his 19 fights in that arena. A classic boxer with a devastating right hand with which he kayoed 57 opponents. Larken won the title via a decision over Willie Joyce of Chicago in one of boxings greatest action-packed 12-rounds of boxing ever witnessed in the Boston Garden ring. Both fighters went the distance with not one clinch in this fast and furious scrap. Tippy Larkin was inducted into Boxing's Hall of Fame on September 12, 1972.

Texas businessman Dave Gorman has a stable of fighters who are gaining world wide recognition. Within one week his Gene Hatcher won the WBA junior welterweight title. Popular southpaw lightweight Robin Blake, 23-2, won a round decision from Tom Baker, 11-1-2. Gorman did have one setback when his number two rated bantamweight Harold Petty, 23-3, lost to Columbia's Osvaldo Acevedo, 13-2, when the fight was stopped when Petty received a severe cut over his eye in the fifth stanza.

Bonnie Georgine, manager of Jaime Garza the WBC bantamweight champ, said his warrior will move up and challenge for the 126-pound crown after he defends against Mike Ayala. Georgine said, "We're in this for the money and it's not available in the obscure 122-pound class." Georgine continued, "By going up to the more popular weight division I may secure national TV exposure for the most explosive fighter (Garza) in boxing."

Many in the boxing whirl in New York, New York and the Scranton area are saddened by the report of Anthony "Duke" Stefano taking the "Long Count." As we reported several weeks ago Duke was felled by a heart attack from which he did not recover.

Middleweight Mike "Choir Boy" Landini, 20-1 with 10 K.O.'s, of Chicago, Ill., won a majority 10-round decision over Wilbert "Vampire" Johnson, 25-5-1 with 16 K.O.'s, of Indianapolis, Ind., at the Holiday Star Plaza in Merrillville, Ind. In the semi-final heavyweight Cecil Coffee, 15-0-1, of Knoxville, Tenn. and Andrew Stokes, 8-0-2, of Indianapolis, Ind. fought to an 8-round draw; Junior welterweight Darryl Anthony, 17-2-2 of St. Louis, Mo., WTKO at the end of five rounds over Anthony Bryant, 12-6, of Nashville, Tenn. and junior welterweight Ken Snider, 7-0, of Decker, Ind. W (maj.) Dec. in 4-rds. over Randy Reed, 3-3, of Terre Haute, Ind. The promotion was by Bob Arum's Top Rank. Broadcast was by ESPN Cable.

More than five countries that had boxers compete in the Olympic Games went home bitter as a result of the pitiful officiating. A defeat in a sport does not shape bitterness. However, the horrendous decisions and many of the ridiculous scores has prompted the athletes from foreign countries to voice their displeasure of fighting under pre-ordained disadvantage. Noticeable were questionable decisions in favor of fighters who are in line for lucrative professional contracts. Two questions have arisen: 1-How did the officials know which boxers to favor? 2-Where were any inducements? Korean boxing chairman Woun Kim summed the controversial officiating in the this warning statement: "We've heard home-town decisions in Los Angeles. You may learn even more in 1988."

The 1988 Olympic Games are scheduled to be held in Korea. The next day, after Mr. Kim's statement, middleweight Joon-Sup Shin of Korea won the only gold medal of the boxing competition.

Former top-ranked welterweight Charlie Fusari, known as the "Fighting Milkman" is up and around after a bout with a serious illness. And he's looking good. Charlie was a great fighter and always a gentleman.

Puerto Rican born Pedro Alindato moved into the Paterson, N.J. area and joined the Lou Costello Gymnasium to learn the rudiments of boxing. He asked Al Moore to manage and train him. Alindato has the natural fighting ability that enabled him to learn in a few months at a fast pace. The good-looking youngster had a successful amateur stint. He joined the pros Nov. 6, 1980. As Pedro was attaining recognition among the bantamweights he suddenly announced he was through with fighting to return to Puerto Rico. Whether he returned to the island is not known.

Surplus Milk Is Available In Belleville

Continued from page one

\$18,870 annually and monthly of \$1,573; 5 — \$22,089 annually and \$1,641 monthly; 6 — \$25,308 yearly and \$2,109 monthly; 7 — \$28,527 yearly and \$2,378 monthly; and 8 — \$31,746 yearly, and \$2,646 monthly.

Those applying for the surplus must either have income eligibility or be enrolled in one of the assistance programs. Persons knowing anyone who cannot get out to collect their milk, but who is eligible for the assistance, can collect the dairy product with the presentation of proper identification.

Klophaus Promoted By Prudential

Belleville resident Margaret S. Klophaus has been promoted to pension consultant in the Florham Park office of the Prudential Asset Management Company, Inc., a subsidiary of the Prudential Insurance Company.

Klophaus joined the company in 1973 as a pension technician. She advanced to pension administrator in 1978, a position she has held until this promotion.

A 1970 graduate of Nutley High School, Klophaus attended Newark State College and the Montclair State College. She serves on the Bethany Lutheran Church Council in Belleville. Her husband Kent is a programming analyst at the Prudential Insurance Company's Information Systems Office in Roseland.

PARK MANOR NURSING HOME

Dedicated to Better Patient Care
Specializing in Female Patients
PROFESSIONAL NURSING STAFF
REHABILITATION PROGRAM
PHYSICAL THERAPY
OXYGEN FRACTURE EQUIPMENT
SPECIAL DIETS

- AGED
- CONVALESCENT
- CHRONICALLY ILL
- POST-OPERATIVE
- 24 Hour Nurses, Bloomfield

743-7772

Member of All American Nursing Home Association
Professional Care in a Homelike Environment

MORE! From BIGELOW MOTORS

More Deals!
More Savings!
More Selection!
More Service!
More for You!



Loaded With '84 Leftovers
You Pick the Car!
You Pick the Price!
"LEASE OR BUY"

CHRYSLER PLYMOUTH



BIGELOW MOTORS

50 Washington Ave., Belleville

"Same Owners Since 1939"

759-4220

ORTHODONTICS



AFFORDABLE BRACES
FOR CHILDREN & ADULTS

CONVENIENT HOURS
(EVENINGS TOO!)

DENTAL
INSURANCE
WELCOME

SECOND OPINIONS PROVIDED

NEVER A CHARGE FOR CONSULTATIONS
DR. MICHAEL B. FITZPATRICK
484 Washington Ave. Belleville
759-2173

A TRADITION CONTINUES....

E. Donald Harrison & Son
Funeral Home
Stanton Funeral Home



Over fifty years of service to Nutley and the surrounding area. It is just a change in name. Don Harrison has managed the funeral home since 1947. E. Donald Harrison Jr. is licensed and has joined his father. We will continue to offer the same personalized service with dignity and sincerity as we have in the past.

E. Donald Harrison & Son
Funeral Home Inc.
661 Franklin Ave. Nutley 667-3131

Volleyball Coach Looking To Rebuild Team Strength

They have been one of the most successful teams at Belleville High School over the last two seasons. Now, with the loss of three valuable seniors to graduation last spring, the Belleville volleyball team begins the 1984 season with a lot of question marks.

"We're going to have a tough time," said Worley, better known as "Worley's Wizards." "We lost three good seniors to graduation last year and will have a tough time replacing them. There is some talent, it's just that they haven't had the varsity experience."

Returning to the lineup will be senior Debbie Worley. The four-year starter and team captain this year is the team's best setter and is also an excellent hitter. At 5'2" tall, she is the smallest of the starters.

"This is the tallest team we've had in 'year," said Worley. "Of our girls are 5'7" or 5'8". We should be in good shape in that area."

Senior Donna Brooks, a fine all-around athlete, will be back this year. Brooks, at 5'8", is a superior jumper and is being looked at by some colleges to play volleyball next year. Sheri Phelps, a returning letter woman, will also be a big help. Phelps has improved a great deal over the year and her experience will be a factor.

"Our first three girls should be good," said Worley. "They have good experience and know their assignments."

The loss of talented Faith Adams, Tracy Buono and Kathy Kelleher last year will hurt. Adams, now playing at East Stroudsburg with another BHS alumna, Allison Burden, could do it all. She had good leaping ability, was a devastating hitter and could win a game practically single-handed. Buono, now at Rutgers playing softball, was an excellent server and fine all-around athlete. Replacing a person of her caliber is difficult, to say the least.

Sophomore Laura Caruso has been coming along nicely and should fill one of the open positions. Caruso was a tennis player last fall, but she decided to try volleyball and Worley is more than glad to have her.

Senior Liz Godrick platooned last year with Kelleher and should be a key player this year. Junior Lisette Rodriguez, a good hitter, could win a varsity position. About the only factor against her is inexperience, but Worley is hoping the junior can step in and do the job.

Sophomore Chris Melillo and junior Joan Aligelt, both 5'9", could be a big help for the girls. Melillo has to get off her feet a little more and has shown improve-

ment. Aligelt should do well on the front line and is playing her first year. If she doesn't start with the varsity, she should see time on the junior varsity level.

The team has height and talent but lacks experience. The schedule should provide steady competition. Worley pointed out that the girls defeated all the teams on the 1984 schedule in 1983, but that is just hindsight.

SHERIFF'S SALE
SUPERIOR (CHANI) 483
SUPERIOR COURT OF NEW JERSEY, CHANCERY DIVISION, ESSEX COUNTY, DOCKET NO. F-80181 FIRST DEWITT SAVINGS AND LOAN ASSOCIATION, A Corporation of the State of New Jersey, PLAINTIFF vs. BARBARA D. HILL, single et al., DEFENDANTS. AMENDED Execution For Sale of Mortgaged Premises. By virtue of the above stated writ of Execution, to me directed, I shall expose for sale by Public Auction, in SHERIFF'S OFFICE, Essex County Courts Building, Newark, on Tuesday, the 9th day of October, next, at one-thirty P.M. (Prevaling Time). The property to be sold is located in the Township of Bloomfield, in the County of Essex and State of New Jersey. The premises are commonly known as 71 Linden Avenue, Bloomfield, New Jersey. Tax Lot 1 in Block 217. Dimensions of Lot: 37.5 feet wide by 100 feet long. The nearest cross street: Situate on the West side of the premises, 6 feet from the East side of Clinton Street.

A Complete description can be found in the Essex County Register's Office. The approximate amount of the Judgment to be satisfied by said sale is the sum of THIRTY TWO THOUSAND FOUR HUNDRED SEVENTY TWO DOLLARS AND TWENTY FOUR CENTS (\$32,472.24), together with the costs of this sale.

The Sheriff reserves the right to adjourn the sale from time to time as provided by Law. Newark, N.J. September 4, 1984.

THOMAS J. D'ALESSIO, Sheriff
Don't Ambrogio & Martone, Attorneys
The Belleville Times
Sept. 13, 20, 27,
Oct. 4, 1984
Fee: \$77.08

No. 884-372

SHERIFF'S SALE
SUPERIOR (CHANI) C-54
SUPERIOR COURT OF NEW JERSEY, CHANCERY DIVISION, ESSEX COUNTY, DOCKET NO. F-127484 NEW JERSEY MORTGAGE FINANCE AGENCY, PLAINTIFF vs. LIZZIE BEST, et al., DEFENDANTS. Execution For Sale of Mortgaged Premises. By virtue of the above stated writ of Execution, to me directed, I shall expose for sale by Public Auction, in SHERIFF'S OFFICE, Essex County Courts Building in Newark, on Tuesday, the 9th day of October, next, at one-thirty P.M. (Prevaling Time). Municipality: Town of Irvington, County of Essex.

Street address: 92 Ellis Avenue
Tax Lot and Block: Lot 13, Block 166
Approximate dimensions: 24' x 94' x 3' x 17' x 25' x 110'
Nearest cross street: Hopkins Place
A full legal description is available in the Office of the Register of Essex County.

The approximate amount of the Judgment to be satisfied by said sale is the sum of THIRTY-TWO THOUSAND THREE HUNDRED NINETY-TWO DOLLARS AND FORTY-FIVE CENTS (\$32,392.45), together with the costs of this sale.

The Sheriff reserves the right to adjourn the sale from time to time as provided by Law. Newark, N.J. September 4, 1984.

THOMAS J. D'ALESSIO, Sheriff
Alvin D. Miller, Attorney
The Belleville Times
Sept. 13, 20, 27,
Oct. 4, 1984
Fee: \$77.44

No. 884-371

SHERIFF'S SALE
SUPERIOR (CHANI) C-26
SUPERIOR COURT OF NEW JERSEY, CHANCERY DIVISION, ESSEX COUNTY, DOCKET NO. F-3896-81 GLOBE MORTGAGE COMPANY, PLAINTIFF vs. WILLIE MAE OWENS, et al., DEFENDANTS. Execution For Sale of Mortgaged Premises.

By virtue of the above stated writ of Execution, to me directed, I shall expose for sale by Public Auction, in SHERIFF'S OFFICE, Essex County Courts Building in Newark, on Tuesday, the 28th day of September, next, at one-thirty P.M. (Prevaling Time). Premises are located in the Town of Irvington, County of Essex, State of New Jersey. Premises are commonly known as: 31 Ellis Avenue.

Tax Lot No. 21 Block No. 205.
Dimensions of Lot: Approximate: Northwestly line of Ellis Avenue 25 ft. from top x 150.47 ft. x 25 ft. x 150.18 ft.

Nearest Cross Street: 225.36 ft. from the intersection of the Northwestly line of Ellis Avenue and Southwestly line of Alpine St.

A Complete description can be found in the Essex County Register's Office.

The approximate amount of the Judgment to be satisfied by said sale is the sum of FORTY-NINE THOUSAND FIVE HUNDRED FIFTY-SEVEN DOLLARS AND SEVENTY-FIVE CENTS (\$49,557.75), together with the costs of this sale.

The Sheriff reserves the right to adjourn the sale from time to time as provided by Law. Newark, N.J. August 20, 1984.

THOMAS J. D'ALESSIO, Sheriff
Paul W. Ross, Attorney
The Belleville Times
Aug. 30,
Sept. 6, 13, 20, 1984
Fee: \$77.08

No. 884-358

Rec Soccer League Applications Available

Applications for the 1984 Recreation Soccer leagues are now available at the Recreation Department Office, 407 Joramemon St. Boys and girls of seven through 14 years of age who are residents of Belleville are eligible to take part in this program which is conducted in the fall.

Participants must be at least 7 years old on Dec. 1, 1984 and cannot be 14 years old before Sept. 1, 1984. All persons interested in playing must apply even if they played last year. Ninth graders are not eligible.

Registration will be accepted in person only Monday-Friday between 8:30 a.m.-noon and 1-4 p.m. Parental permission and birth certificates are required for all applicants. No applications will be accepted by mail, by phone or through the schools. Deadline for applications is Friday, Sept. 14. Ninth graders are not eligible.

Applications for the 1984 Belleville Recreation Football leagues are also available at the Recreation Department Office. Boys, ages 10-14 and weighing between 70-145 pounds, are eligi-

ble for this fall program. Prospective participants must be at least 10 years old on Dec. 1, 1984 and cannot be 14 years old before Sept. 1, 1984. Ninth graders are not eligible. All persons must reapply.

Registration forms for football can be picked up at the Recreation Department on Monday through Friday 8:30 a.m.-noon and 1-4 p.m. Parental permission and birth certificates are required for each and every boy at the weigh-ins on Sept. 11 at the Rec House.

Applications for Peanut League Touch Football are also now available at the Rec House. Boys, ages 8-10, are eligible for this fall program. Participants must be at least 8 years old on or before Dec. 1, 1984 and no older than 10 years old on Dec. 1, 1984.

Applications for all programs will also be available in the schools. All applications must be returned to the Rec House before the Sept. 14 deadline with birth certificates.

THE JOHNESEE NUTLEY HOME FOR FUNERALS



OUR SILVER ANNIVERSARY

Continuous Community Service

- Serving with dignity & understanding
- Pre-need counseling & arrangements
- Spacious private parking & facilities

667-2300

536-544 Washington Ave., Nutley, N.J.

Everett G. Johnesee, Resident Director
Mary Jayne Johnesee, Director
Kenneth W. Link, Director

Employees Are Needed

The Belleville Recreation Department is presently seeking several part-time employees to lead and supervise indoor recreation activities.

One adult woman is needed to conduct its aerobics classes which are held one night a week. Four adults and/or college students are needed on Tuesday and Thursday afternoons to supervise an intramural program at the Belleville Middle School.

If interested or for more information, contact Dennis Buckley at the Belleville Recreation Department, 759-3142 between 8:30 a.m.-4 p.m.

New Brighton Pub
Grand Opening
27th Sept
Continuous
Co-Go Till 6 p.m.
Food & Fun
From 1 p.m. till ?

35 Harrison St.
Belleville, N.J.
759-9580

Everyone's
Welcome

Your Hosts: Angelo
-n-
Susan

BACK PAIN NECK PAIN IT COULD BE PINCHED NERVES

Pinched Nerves May Result In:

- HEADACHES
- LEG PAIN
- DIZZINESS
- NUMBNESS
- SHOULDER PAIN

WHY SUFFER NEEDLESSLY?

A SPINAL EXAMINATION CAN
REVEAL IF YOU HAVE PINCHED NERVES

LIMITED TIME OFFER

ORTHOPEDIC NEUROLOGICAL
SPINAL EXAMINATION \$25

Most Insurances Provide Coverage
Health (Major Medical 80%) Liability (Auto Accident 100%)
Approved Workman's Compensation (for job injury 100%)
* Most provide coverage with satisfied deductible

Bloomfield Chiropractic Center
858 Joramemon St. Belleville

759-3600

Dr. Gerald Mattia D.C.
Dr. Susan Guarino D.C.

TRANSCOM
NEWARK
AIRPORT
SERVICE
470-0981
\$20 ONE
WAY
FOR THE CAR

Watch For Our Grand Opening

Eat-In
Take-Out

Chicken
Holiday

Bar-B-Q Ribs
&
Seafood

FRESH PERDUE CHICKENS SERVED DAILY

Catering For All Occasions
"Let Us Cater Your Next Affair"

368 Main St.
(Grand Union Shopping Center)
Belleville, N.J. 759-4435

Here's just a sample of what you'll find in the New Price Finder for Specials.

U.S.D.A. Choice - Boneless Beef
Bottom Round Roast
157
Lb.

Assorted Flavors
Sealtest Ice Cream
199
Half Gal. Cont.

Super GRAND UNION Coupon
Buy One Get One FREE!
Get One 1-Lb. Pkg. - Assorted Imported Varieties
Spigadoro Pasta
When you buy one 1-lb. pkg. Spigadoro Imported Pasta at our regular low price
No Minimum Purchase Required With This Coupon
Good Sept. 16 Thru Sept. 22. Limit One Coupon Per Customer.

Regular, Barbecue, Sour Cream & Onion
Bacon & Sour Cream or Ruffles
Lay's Potato Chips
99¢
7-oz. Pkg.

U.S.D.A. Choice - Fresh Genuine Spring
Shoulder Lamb Chops
177
Blade Bone Lb.

Super GRAND UNION Coupon
No Caffeine - Never Had It, Never Will
7-Up or Diet 7-Up
79¢
One 2-Ltr. Btl.
No Minimum Purchase Required With This Coupon
Good Sept. 16 Thru Sept. 22. Limit One Coupon Per Customer.

For Spaghetti - Meat or Marinara
Progresso Sauce
99¢
2-Lb. Jar

Chiquita and Other Brands
Golden Bananas
3 99¢
Lbs.

Oatmeal, Petite Beurie, Nice
Shortcake, Rich Tea or Arrowroot
Peek Frean Cookies
79¢
7-oz. Pkg.

THE BUTCHER BLOCK

U.S.D.A. Choice - Boneless Beef
Bottom Round For Swiss Steak
187
Lb.

Colonial Master
Smoked Pork Shoulder
129
Water Added Lb.

3-Lb. Roll
Signature Fresh Ground Beef
127
Ea. Lb.

Gov't. Grade 'A' Fresh - Boneless
Perdue Boneless Chicken Breasts
247
Lb.

Rump Roast 179
U.S.D.A. Choice - Boneless Beef Lb.
Round Cubed 229
U.S.D.A. Choice - Boneless Beef Steak Lb.
Beef Brisket 189
Kings Pride - Corned U.S.D.A. Choice Lb.
Lamb Chops 187
Genuine Spring Shoulder - Round Bone Lb.
Lamb For Stew 99¢
U.S.D.A. Choice - Genuine Spring - Sliced Lb.
Colonial Bacon 159
Special Cut or Maple Cured - Sliced 1-Lb. Pkg.
Danish Ham 289
Grand Union - Sliced 1-Lb. Pkg.

Perdue Fowl 69¢
Grade 'A' Frozen - Whole 5 to 6 Lbs. Lb.
Kosher Turkeys 99¢
Hebrew National - Grade 'A' 10 to 16 Lbs. Lb.
Chicken Franks 97¢
Perdue - Lean 1-Lb. Pkg.
Sausage Links 169
Krauss - Pork 1-Lb. Pkg.
Meat Franks 169
Oscar Mayer 1-Lb. Pkg.
Turkey Ham 169
Land O' Frost - Boneless Lb.

PRODUCE

U.S. No. 1 - California
Fresh Crisp Iceberg Lettuce
49¢
Each Head

California
Sweet Juicy Bartlett Pears
49¢
Lb.

Green Peppers 59¢
Locally Grown - Large Size Lb.
Italian Prunes 39¢
New York State Lb.
Brussels Sprouts 99¢
Fresh - Tender 10-oz. Cup
Limes 10 For 89¢
Florida - Large Juicy
Eggplant 59¢
Locally Grown Lb.
Fresh Avocados 59¢
Florida - Large 12 Size Each
Red Potatoes 3 79¢
California - U.S. No. 1 Lbs.
Concord Grapes 189
New York State 2 Qt. Cont.

GROCERIES

Crushed, Puree (1-Lb., 13-oz.) or California
Progresso Tomatoes
69¢
1-Lb. 12-oz. Can

Chick Peas, Red Kidney or
Progresso Cannellini Beans
2 99¢
1-Lb. 3-oz. Cans

America's Favorite
Tide Laundry Detergent
189
3-Lb. 1-oz. Pkg.

Split Pea, Macaroni & Bean or
Progresso Lentil or Minestrone Soup
59¢
1-Lb. 3-oz. Can

Tomato Paste 3 For 89¢
Progresso - California 6-oz. Cans
Tomato Sauce 4 For 100
Progresso - California 8-oz. Cans
Olive Oil 799
Progresso - Pure 1-Gal. Cont.
Applesauce 69¢
Mont's - Regular 1-Lb. 9-oz. Jar
Pork'n Beans 3 For 100
Campbell's - In Sauce 1-Lb. Cans
Snowy Bleach 179
Color Safe - Liquid Half Gal. Cont.
Lestoil Shampoo 195
for Rugs 1-Lb. 6-oz. Cont.
Ivory Liquid Soap 143
Refill 1-Pt. 2-oz. Cont.

Wine Vinegar 89¢
Progresso - In Decanter 1-Pt. 9-oz. Btl.
Bread Crumbs 109
Progresso - Flavored 1-Lb. 8-oz. Cont.
Clam Sauce 99¢
Red or White or Rock Lobster 10-oz. Can
Bumble Bee Tuna 99¢
Solid - In Oil or Water 6-oz. Can
Hunt's Ketchup 99¢
Fancy Tomato 2-Lb. Btl.
Downy Softener 309
For April Soft Fabric 3-Qt. Cont.
Top Job Cleaner 169
All Purpose Liquid 1-Pt. 12-oz. Btl.
Scotties Tissues 99¢
Facial - Jumbo Pack Pkg. of 300

Family Pack Savings
SAVE 10¢ A LB. ON PKGS. OF 3 LBS. OR MORE
Chicken 117
Holly Farms Combo Grade A Fresh 3 breasts split with ribs, 3 drums, 3 thighs. Ea. Lb.

DATE-LINE DAIRY

Sour Cream 99¢
Sealtest - Pasteurized 1-Lb. Cont.
La Yogurt 2 For 79¢
Assorted Fruit Flavors 6-oz. Cans.
Cream Cheese 149
Temple - Whipped 2-oz. Cont.

THE BIG FREEZER

Spinach 3 For 100
Grand Union 10-oz. Pkg.
Heinz Deep Fries 125
Country Style Dinner Fries 1-Lb. 4-oz. Pkg.
French Toast 95¢
Aunt Jeanina 9-oz. Pkg.
Original or Cinnamon Swirl

General Merchandise

Ice Milk 199
Assorted Flavors Half Gal. Cont.
Waffles Downyflake 125
Jumbo Pack 1-Lb. 3-oz. Pkg.
Pumpkin Custard 169
Mrs. Smith - 8-Inch Pie 1-Lb. 10-oz. Pkg.

CORNER DELI
AVAILABLE IN STORES WITH SERVICE DELI
Bologna Schickhaus 119
or Braunschweiger Half Lb.
Cole Slaw 67¢
Made with Hellmann's Mayonnaise Lb.
Swiss Cheese 169
Great Lakes - No Salt Added Half Lb.
Chicken Roll 127
Weaver's - Sliced Half Lb.

GRAND UNION Coupon
10¢ Off
With This Coupon And Purchase Of One Half-Lb. Pkg. - Lightly Salted Quarters
Breakfast Butter
Coupon Good Sept. 16 Thru Sept. 22. Limit One Coupon Per Customer.

GRAND UNION Coupon
30¢ Off
With This Coupon And Purchase Of One 8-oz. Jar - Regular
Maxim Freeze Dried Coffee
Coupon Good Sept. 16 Thru Sept. 22. Limit One Coupon Per Customer.

GRAND UNION Coupon
20¢ Off
With This Coupon And Purchase Of One 1-Lb. 5-oz. Can. Reg. or Lite Cherry Blueberry or Johnson's - Just Just For Baby
Comstock Apple Pie Filling
Coupon Good Sept. 16 Thru Sept. 22. Limit One Coupon Per Customer.

MOST GRAND UNIONS ARE
OPEN 24 HOURS
Check your local Grand Union for store hours.

GRAND UNION

MOST GRAND UNIONS ARE
OPEN 24 HOURS
Check your local Grand Union for store hours.

Prices effective Sunday, Sept. 16 thru Saturday, Sept. 22 at all Grand Union stores in New Jersey, Rockland and Orange Counties. In order to assure a sufficient quantity of sale items for all our customers, we reserve the right to limit sales to 3 packages of any item unless otherwise noted. Not responsible for typographical errors. For store information call toll free, 1-800-221-1835.

WICKER BAMBOO

WICKERLAND
Furniture - Lamps
Baskets - Accessories
Large selection of wicker to fit
any purpose of good quality,
versatile priced.
Shop in and Rowe
434 CHURCH STREET
MONTCLAIR
783-6345

WATERBED, QUEEN SIZE
1 1/2 years old, \$450, or
best offer. Call 751-9591.

WANTED TO BUY

GUN COLLECTOR
LICENSE #234
Need to buy for cash -
DAGGERS SWORDS
ESPECIALLY MILITARY ITEMS
Evaluations & Appraisals
All transactions confidential.
Call: 753-6145

USED TV'S
BOUGHT
CALL
673-3845

I'M BUYING TOOLS!
• Old • Used
Any Type, Any Quantity
Call "GENE"
696-4908 171-6666
Bet. 4pm-6pm Anytime

LIONEL AND
OTHER TRAINS
CRAZY COLLECTOR
PAYS TOP PRICE.
Call 634-8709
OR 333-2058

RECREATION

SUN GLO CORP.
ITALIAN
"BOCC" BALLS
BILLIARDS, RECREATIONAL
SUPPLIES, BOOKS &
ACCESSORIES
DOMESTIC & IMPORTED
CIGARS
GENUINE BRIGIAN BALLS
111 West 1st St. Belleville
759-4474

HELP WANTED

MAINTENANCE PERSON
FOR HIS
APARTMENT BUILDING
Seeking experienced English
speaking person for a full time
position.
Call 482-5556

PART TIME
JR. LIBRARY ASSISTANT
Open to Belleville residents
only. Call Mr. Bryant at the
BELLEVILLE PUBLIC LIBRARY
759-7900

PROVIDENT
SAVINGS BANK
HAS SEVERAL POSITIONS
OPEN FOR TELLERS

BLOOMFIELD CENTER,
BROOKDALE, AMPERE, BEL-
LEVILLE
Bank Teller or Cashier
EXPERIENCE PREFERRED.
PLEASANT WORKING CON-
DITIONS.
EXCELLENT BENEFITS
PACKAGE.
CALL PERSONNEL DEPT.
759-5780

EQUAL OPPORTUNITY
EMPLOYER M/F
MEMBER OF F.D.I.C.

LEGAL SECRETARY
FOR MEDIUM SIZE NUTLEY
LAW FIRM. STENO NEEDED.
SARY WILL TRAIN. SALARY
COMMENSURATE WITH EX-
PERIENCE.
Call 661-5000

LEGAL SECRETARY
With ambition, motivation and
linguistic experience sought by
expanding West Orange firm.
IRM card or display w/ter-
minations helpful. Salary
commensurate with experi-
ence and qualifications; extensive
benefits.
Please contact Arlene Kramer
736-1180

FACTORY HELP
BELLEVILLE AREA.
8:30 A.M.-5 P.M.
LIGHT ASSEMBLY
\$4.50 PER HOUR
TO START.
AUTOMATIC RAISES.
Call 482-8604

MAGAZINE DISTRIBUTOR
LOOKING FOR P/T
FEMALE/IN GENERAL OF-
FICE WORK. WILL TRAIN.
1/2 OR 1-5.
B. DE BOER, INC.
667-9300

RECEPTIONIST
Hillside manufacturer needs
receptionist. Responsibilities
include: switchboard opera-
tion, filing & light typing.
Very good benefit package.
For interview please
call Personnel Dept.
353-6700

RECEPTIONIST/SECRETARY
We are seeking an assertive
individual to handle diver-
sified duties in our company.
Position requires light typing,
pleasant and organized work
manner & general secretarial
capabilities. Pleasant work-
ing conditions & good
benefits. Call Carol
Thompson for appt.
THOMPSON PRINTING CO.
302 4th St.
Belleville
759-6100

HELP WANTED

CARPET SALESPERSON
HOURS 10AM TO 4PM
SOME BOOKKEEPING
APPLY IN PERSON
HOUSE OF RUGS & DRAPERIES
510 KEARNY AVE.
KEARNY, N.J.
997-2282

OBC TV 36 IS LOOKING FOR AN
AGGRESSIVE & MOTIVATED
ADVERTISING SALESPERSON
WITH CLIFTON-PASSAIC CON-
TACTS. SALES EXPERIENCE IN
BROADCAST SALES PREFERRED.
EXCELLENT COMMISS-
ION/DRAW.

SEND RESUME TO:
THE NUTLEY SUN
BOX 127
NUTLEY, N.J. 07110

SALESPERSON WANTED
FULL TIME POSITION AVAILABLE
AT RETAIL PAINT ESTABLISHMENT.
MONDAY THRU SATURDAY.
APPLY IN PERSON:
JOSEPH RICCIARDI PAINTS
91 WASHINGTON AVE.
NUTLEY

OFFICE HELP
PART TIME
Must type and use 10 key adding machine. Ex-
perience on CRT helpful. Apply in person:

SALLY'S AUTO PARTS
75 Franklin Avenue,
Nutley

FILE CLERK - NIGHTS
Prepare & microfilm documents & filing.
Microfilm experience helpful. Train days.
Liberal company benefits. Call, write or
apply Personnel Dept. 997-3000.

Goody Products, Inc.
969 Newark Tpke.
Kearny, New Jersey 07032

CREDIT CORRESPONDENT
Interesting diversified duties including
Dunning Customers, phone work, cor-
respondence & credit investigations. Exp.
on I.B.M. CRT & D&B Terminals. Typing
required. Liberal company benefits. Sub-
mit letter or resume w/salary desired to:
P.O. Box 524
Kearny, N.J. 07032

SECRETARY
To V.P. Distribution. Interested, diver-
sified duties. Good typing skills & steno
necessary. Excellent starting salary,
liberal company benefits. 35 hour week.
Call, write or apply:
Personnel Dept. 997-3000
Goody Products, Inc.
969 Newark Tpke.
Kearny, New Jersey 07032

TOOL & DIEMAKER
All round experience. Build & repair
automatic machines, progressive dies,
etc. Steady employment. Outstanding
benefits. Call, write or apply:
Personnel Dept. 997-3000
Goody Products, Inc.
969 Newark Tpke.
Kearny, New Jersey 07032

TRUCK DRIVER
WAREHOUSE PERSON
FULL TIME. Knowledge of North Jersey area help-
ful. Good working conditions, overtime, all
benefits. Apply in person:

SALLY'S AUTO PARTS
75 Franklin Avenue,
Nutley

DRIVER
Knowledge of N.Y.C. - N.J. - LI. areas.
Office Services required when not driv-
ing. Liberal company benefits.

Call Personnel Dept. 997-3000

HELP WANTED

WORD PROC. Director of
Education. For seeks highly
proficient individual, editing skills,
\$14K+, fee per call 783-
4400

APPLE AGENCY
460 Bloomfield Ave.
Montclair

**SECURITY
GUARDS**
ARMED & UNARMED
Experience preferred, but will
train qual. candidates. Ideal
for college students or persons
on fixed incomes.

HOME PHONE CALL REQUIRED
Good starting salary, B/C
8:15 AM-12 PM, 3 to 4 hours,
vacation.

APPLY IN PERSON
429-0100
9-5, M-F

HOLMES
SECURITY CORP.
554 Bloomfield Ave. Bloomfield, N.J.

**CONSTRUCTION
TRUCK DRIVER**
CALL RAY
BETWEEN 8PM-10PM
WEEKDAYS
ALL DAY SATURDAY
654-5598

PART TIME
Telephone interviewers for
Clifton office. Ideal for stu-
dents, homemakers, 2nd in-
come. Good speaking voice.
Will train. Hours: 9 to 12
noon, 12 to 3pm, 3 to 6pm.
Call 778-3766

DRIVER/WAREHOUSEMAN
TO DRIVE 18 FT. SAE
KNOWLEDGE OF N.Y., N.J.
METRO AREA HELPFUL.
MUST BE WILLING TO
WORK IN WAREHOUSE
WHEN NOT DRIVING. Paid
CO. BENEFITS. Call 440-
0708 8:5PM.

**CARPENTER &
PATERSON, INC.**
15 Liberty St. Linle Ferry, NJ

PART TIME. Pleasant
TELEPHONE MAN. Typ-
ing ability. 1:30-4PM or
2PM-6PM. W/F. Clifton area.
Call: 778-7722. Ext. 501

RECEPTIONIST/TYPIST
Busy informal office, ans
phones, typ. recpts.,
proposed. No. Waits to \$250.
fee per call 783-4400.

APPLE AGENCY
460 Bloomfield Ave.
Montclair

PART TIME
National company will train
highly motivated, creative
individuals for a unique
career in art & decorating.
Call 681-0157

**GAL/GUY
FRIDAY**
We are looking for a top-
notch all around Gal/Guy
Friday with excellent skills in
typing, filing, phone use, etc.
Good starting salary, all
company paid benefits and
13 paid holidays. You will be
working in our modern office
in the Branch Brook area in
Clifton in Belleville. Call 493-
7700.

NEWARK WIRE
Cloth Co.
351 Newark Ave.
Newark, N.J.
Equal Opportunity Employer M/F

STOCK CLERK
SMALL COMPANY RE-
QUIRES TRAINEE TO WORK
IN STOCK ROOM. GOOD
HAND WRITING. AND
WORKING WITH NUMBERS
A MUST. CALL MISS WIN.
661-3436

CHAUFFEUR
PART TIME
On a demand basis for
private party. Must be ex-
perienced with top creden-
tials. Car based in Essex
County. Send credentials to
The Nutley Sun
Box 132
Nutley, N.J. 07110

STOCK CLERK
SMALL COMPANY RE-
QUIRES TRAINEE TO WORK
IN STOCK ROOM. GOOD
HAND WRITING. AND
WORKING WITH NUMBERS
A MUST. CALL MISS WIN.
661-3436

CHAUFFEUR
PART TIME
On a demand basis for
private party. Must be ex-
perienced with top creden-
tials. Car based in Essex
County. Send credentials to
The Nutley Sun
Box 132
Nutley, N.J. 07110

STOCK CLERK
SMALL COMPANY RE-
QUIRES TRAINEE TO WORK
IN STOCK ROOM. GOOD
HAND WRITING. AND
WORKING WITH NUMBERS
A MUST. CALL MISS WIN.
661-3436

CHAUFFEUR
PART TIME
On a demand basis for
private party. Must be ex-
perienced with top creden-
tials. Car based in Essex
County. Send credentials to
The Nutley Sun
Box 132
Nutley, N.J. 07110

STOCK CLERK
SMALL COMPANY RE-
QUIRES TRAINEE TO WORK
IN STOCK ROOM. GOOD
HAND WRITING. AND
WORKING WITH NUMBERS
A MUST. CALL MISS WIN.
661-3436

CHAUFFEUR
PART TIME
On a demand basis for
private party. Must be ex-
perienced with top creden-
tials. Car based in Essex
County. Send credentials to
The Nutley Sun
Box 132
Nutley, N.J. 07110

STOCK CLERK
SMALL COMPANY RE-
QUIRES TRAINEE TO WORK
IN STOCK ROOM. GOOD
HAND WRITING. AND
WORKING WITH NUMBERS
A MUST. CALL MISS WIN.
661-3436

CHAUFFEUR
PART TIME
On a demand basis for
private party. Must be ex-
perienced with top creden-
tials. Car based in Essex
County. Send credentials to
The Nutley Sun
Box 132
Nutley, N.J. 07110

HELP WANTED

TELLER
FULL TIME POSITION
Experience preferred. Neat
appearance, personable
with aptitude in math or
figure work.

GLEN RIDGE
SAYVING & LOAN
2277 RIDGEWOOD AVE.
GLEN RIDGE
743-0471 E.O.E. M/F

FULL OR PART TIME
WOMEN/M FOR LIGHT
FACTORY WORK
BELLEVILLE AREA.
CALL
759-0220 9AM-4PM.

PART TIME
HELP WANTED FOR
WELDING SHOP.
759-6575

PART TIME Pleasant
TELEPHONE MAN. 9AM-
3PM M/F. Clifton area. Call:
778-7722. Ext. 508.

DRIVER/WAREHOUSEMAN
Person needed to drive med.
size truck & do some
warehouse work. Must have
clean driving record. Full
company paid bnfis. Immed.
application will be interview.
481-5545
Ask for Jasper

SITTER WANTED
FOR 9 YEAR OLD AND 10
YEAR OLD. SCHOOL
DISTRICT 477 BELLEVILLE.
AFTER SCHOOL. 3:30-5:30 PM.
CALL 751-8679

P/T position open. Church
of the Holy Spirit. 1000
SPRINGFIELD CHURCH
RUTHERFORD. 438-8623

OFFICE POSITION
BELLEVILLE CO. needs
mature, self-motivated in-
dividual with at least 5 years
experience. Diversified duties
involved, including some
computer knowledge. Good
office commensurate with ex-
perience. Please contact
Linda. 759-0200
8:30AM-4:30PM

LANDSCAPING
Strong, dependable,
motivated ind. needed to
start o.s.p. Exp. nec. Nor-
wood. For advancement, for
right person, see. hrs. Call
667-3258
leave message

CASHIER
Full time. For men's specialty
shop in Upper Montclair.
Call 744-0046

BRIGHT PERSON
INTERESTING, VARIED
DUTIES. 1:30-4PM or
2PM-6PM. W/F. Clifton area.
Call: 778-7722. Ext. 501

RECEPTIONIST/TYPIST
Busy informal office, ans
phones, typ. recpts.,
proposed. No. Waits to \$250.
fee per call 783-4400.

WARHOUSE MAN/W
FOR MANUFACTURER OF
PIPE HANGERS. MUST BE
WILLING TO DO TRUCK
WHEN NEEDED. PAID CO.
BENEFITS. 440-0708 8:5PM.

**CARPENTER &
PATERSON, INC.**
15 Liberty St. Linle Ferry, NJ

PART TIME. Pleasant
TELEPHONE MAN. Typ-
ing ability. 1:30-4PM or
2PM-6PM. W/F. Clifton area.
Call: 778-7722. Ext. 501

RECEPTIONIST/TYPIST
Busy informal office, ans
phones, typ. recpts.,
proposed. No. Waits to \$250.
fee per call 783-4400.

APPLE AGENCY
460 Bloomfield Ave.
Montclair

PART TIME
National company will train
highly motivated, creative
individuals for a unique
career in art & decorating.
Call 681-0157

**GAL/GUY
FRIDAY**
We are looking for a top-
notch all around Gal/Guy
Friday with excellent skills in
typing, filing, phone use, etc.
Good starting salary, all
company paid benefits and
13 paid holidays. You will be
working in our modern office
in the Branch Brook area in
Clifton in Belleville. Call 493-
7700.

NEWARK WIRE
Cloth Co.
351 Newark Ave.
Newark, N.J.
Equal Opportunity Employer M/F

STOCK CLERK
SMALL COMPANY RE-
QUIRES TRAINEE TO WORK
IN STOCK ROOM. GOOD
HAND WRITING. AND
WORKING WITH NUMBERS
A MUST. CALL MISS WIN.
661-3436

CHAUFFEUR
PART TIME
On a demand basis for
private party. Must be ex-
perienced with top creden-
tials. Car based in Essex
County. Send credentials to
The Nutley Sun
Box 132
Nutley, N.J. 07110

STOCK CLERK
SMALL COMPANY RE-
QUIRES TRAINEE TO WORK
IN STOCK ROOM. GOOD
HAND WRITING. AND
WORKING WITH NUMBERS
A MUST. CALL MISS WIN.
661-3436

CHAUFFEUR
PART TIME
On a demand basis for
private party. Must be ex-
perienced with top creden-
tials. Car based in Essex
County. Send credentials to
The Nutley Sun
Box 132
Nutley, N.J. 07110

STOCK CLERK
SMALL COMPANY RE-
QUIRES TRAINEE TO WORK
IN STOCK ROOM. GOOD
HAND WRITING. AND
WORKING WITH NUMBERS
A MUST. CALL MISS WIN.
661-3436

CHAUFFEUR
PART TIME
On a demand basis for
private party. Must be ex-
perienced with top creden-
tials. Car based in Essex
County. Send credentials to
The Nutley Sun
Box 132
Nutley, N.J. 07110

STOCK CLERK
SMALL COMPANY RE-
QUIRES TRAINEE TO WORK
IN STOCK ROOM. GOOD
HAND WRITING. AND
WORKING WITH NUMBERS
A MUST. CALL MISS WIN.
661-3436

CHAUFFEUR
PART TIME
On a demand basis for
private party. Must be ex-
perienced with top creden-
tials. Car based in Essex
County. Send credentials to
The Nutley Sun
Box 132
Nutley, N.J. 07110

HELP WANTED

SALERSPERSONS
FULL TIME
OLYMPIC WOMEN'S
SHOP IN
UPPER MONTCLAIR.
CALL MARIE
744-0058

EXPERIENCED
COUNTER PERSON
TO WORK IN END-HOURS
STORE IN BELLEVILLE.
CALL 997-5052 OR
997-3710

PART TIME
HELP WANTED FOR
WELDING SHOP.
759-6575

PART TIME Pleasant
TELEPHONE MAN. 9AM-
3PM M/F. Clifton area. Call:
778-7722. Ext. 508.

DRIVER/WAREHOUSEMAN
Person needed to drive med.
size truck & do some
warehouse work. Must have
clean driving record. Full
company paid bnfis. Immed.
application will be interview.
481-5545
Ask for Jasper

SITTER WANTED
FOR 9 YEAR OLD AND 10
YEAR OLD. SCHOOL
DISTRICT 477 BELLEVILLE.
AFTER SCHOOL. 3:30-5:30 PM.
CALL 751-8679

P/T position open. Church
of the Holy Spirit. 1000
SPRINGFIELD CHURCH
RUTHERFORD. 438-8623

OFFICE POSITION
BELLEVILLE CO. needs
mature, self-motivated in-
dividual with at least 5 years
experience. Diversified duties
involved, including some
computer knowledge. Good
office commensurate with ex-
perience. Please contact
Linda. 759-0200
8:30AM-4:30PM

LANDSCAPING
Strong, dependable,
motivated ind. needed to
start o.s.p. Exp. nec. Nor-
wood. For advancement, for
right person, see. hrs. Call
667-3258
leave message

CASHIER
Full time. For men's specialty
shop in Upper Montclair.
Call 744-0046

BRIGHT PERSON
INTERESTING, VARIED
DUTIES. 1:30-4PM or
2PM-6PM. W/F. Clifton area.
Call: 778-7722. Ext. 501

RECEPTIONIST/TYPIST
Busy informal office, ans
phones, typ. recpts.,
proposed. No. Waits to \$250.
fee per call 783-4400.

WARHOUSE MAN/W
FOR MANUFACTURER OF
PIPE HANGERS. MUST BE
WILLING TO DO TRUCK
WHEN NEEDED. PAID CO.
BENEFITS. 440-0708 8:5PM.

**CARPENTER &
PATERSON, INC.**
15 Liberty St. Linle Ferry, NJ

PART TIME. Pleasant
TELEPHONE MAN. Typ-
ing ability. 1:30-4PM or
2PM-6PM. W/F. Clifton area.
Call: 778-7722. Ext. 501

RECEPTIONIST/TYPIST
Busy informal office, ans
phones, typ. recpts.,
proposed. No. Waits to \$250.
fee per call 783-4400.

APPLE AGENCY
460 Bloomfield Ave.
Montclair

PART TIME
National company will train
highly motivated, creative
individuals for a unique
career in art & decorating.
Call 681-0157

**GAL/GUY
FRIDAY**
We are looking for a top-
notch all around Gal/Guy
Friday with excellent skills in
typing, filing, phone use, etc.
Good starting salary, all
company paid benefits and
13 paid holidays. You will be
working in our modern office
in the Branch Brook area in
Clifton in Belleville. Call 493-
7700.

NEWARK WIRE
Cloth Co.
351 Newark Ave.
Newark, N.J.
Equal Opportunity Employer M/F

STOCK CLERK
SMALL COMPANY RE-
QUIRES TRAINEE TO WORK
IN STOCK ROOM. GOOD
HAND WRITING. AND
WORKING WITH NUMBERS
A MUST. CALL MISS WIN.
661-3436

CHAUFFEUR
PART TIME
On a demand basis for
private party. Must be ex-
perienced with top creden-
tials. Car based in Essex
County. Send credentials to
The Nutley Sun
Box 132
Nutley, N.J. 07110

STOCK CLERK
SMALL COMPANY RE-
QUIRES TRAINEE TO WORK
IN STOCK ROOM. GOOD
HAND WRITING. AND
WORKING WITH NUMBERS
A MUST. CALL MISS WIN.
661-3436

CHAUFFEUR
PART TIME
On a demand basis for
private party. Must be ex-
perienced with top creden-
tials. Car based in Essex
County. Send credentials to
The Nutley Sun
Box 132
Nutley, N.J. 07110

STOCK CLERK
SMALL COMPANY RE-
QUIRES TRAINEE TO WORK
IN STOCK ROOM. GOOD
HAND WRITING. AND
WORKING WITH NUMBERS
A MUST. CALL MISS WIN.
661-3436

CHAUFFEUR
PART TIME
On a demand basis for
private party. Must be ex-
perienced with top creden-
tials. Car based in Essex
County. Send credentials to
The Nutley Sun
Box 132
Nutley, N.J. 07110

STOCK CLERK
SMALL COMPANY RE-
QUIRES TRAINEE TO WORK
IN STOCK ROOM. GOOD
HAND WRITING. AND
WORKING WITH NUMBERS
A MUST. CALL MISS WIN.
661-3436

CHAUFFEUR
PART TIME
On a demand basis for
private party. Must be ex-
perienced with top creden-
tials. Car based in Essex
County. Send credentials to
The Nutley Sun
Box 132
Nutley, N.J. 07110

STOCK CLERK
SMALL COMPANY RE-
QUIRES TRAINEE TO WORK
IN STOCK ROOM. GOOD
HAND WRITING. AND
WORKING WITH NUMBERS
A MUST. CALL MISS WIN.
661-3436

CHAUFFEUR
PART TIME
On a demand basis for
private party. Must be ex-
perienced with top creden-
tials. Car based in Essex
County. Send credentials to
The Nutley Sun
Box 132
Nutley, N.J. 07110

HELP WANTED

FULL TIME
DRIVER ASSISTANT
Needed to aid in light
deliveries. Must have N.J.
driver's license. Must be
dependable.
Call 667-2244
between 9-5 P.M.

(PART TIME)
Interesting position, involv-
ing telephone contact with
prospective students of a
leading educational institu-
tion. For immediate con-
sideration.
Call Lauren O'Rourke
748-7601

PART TIME
OFFICE HELP
Needed for boy office. Pos-
sibility of full time. Must have
some office and phone
handling experience. Please
inquire in person.
PNC INC.
115 East Centre Street
Nutley
284-1000

COMPUTER
TYPESETTER
High school graduates in-
terested in pursuing a
rewarding career in
business. Must have good
typing skills, computer
knowledge not necessary but
helpful. Will train. Good
benefits.
Call for appt.
678-1556
Mon. thru Fri.

ACCOUNTANT
Entry level position with
Cliff's office products dis-
tributor. Responsible for
bank recs, G/M, invento-
ries, assist on statements

REAL ESTATE REAL ESTATE REAL ESTATE REAL ESTATE REAL ESTATE REAL ESTATE REAL ESTATE REAL ESTATE REAL ESTATE

180 Centre St.
Nutley, N.J. 07110
667-3440

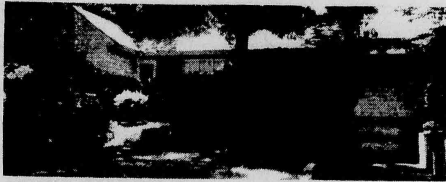
GEORGE E. MACMUNN CO.

REALTORS

100 Woodport Road
Sparta, N.J. 07871
729-8727



JUST LISTED - 2 FAMILY IN BELLEVILLE Only 24 years old - 5 on first, 3 on 2nd; immaculate condition, many extras. ASKING \$109,900.



GRACIOUS LIVING IN NUTLEY PARK - cozy frpl in liv. rm., formal dining rm., 3 bedrooms, 1 1/2 baths, beautiful family room, covered deck - all on 100x90 lot. ASKING \$145,000.

SUCCESS
Our Expert
Sales Staff
Can Achieve
The Same
For You —
List With
MacMunn

Look for this Emblem



JUST LISTED - MINI ESTATE IN ANDOVER TWP., for the discriminating buyer. Beautiful ranch on over 4 acres affords privacy and gracious living, 3 bedrooms, 2 fireplaces, 2 full baths, gazebo overlooking 50' inground pool. JUST MINUTES TO RT. 80. ASKING \$145,900.



LAKE MOHAWK-SPARTA - Contemporary style with a wall of glass overlooking lake on one acre of property, 3 bedrooms, 3 decks, family room, 2 full baths & tax only \$1,680.00.

In a Nutshell...

First Home? This well maintained 3 BR colonial with front and rear porch, back patio and fenced yard is perfect for your young family. At \$65,000.00 it won't last.

Century 21 **WAYNE K. THOMAS**
REALTORS

277 Broad Street Bloomfield, New Jersey
(201) 429-7400

"Each office independently owned and operated"
MEMBER OF BLOOMFIELD, GLEN RIDGE,
NUTLEY, BELLEVILLE BOARD OF REALTORS

WANTED
ALIVE AND WELL BUYER

REWARD

THOMAS
Cozy 2 BR starter with LR, DR, Country kitchen, and Sun Room. Large lot, 2 car garage with storage.
\$75,900.00.

ATTENTION LANDLORDS!!
APARTMENTS WANTED

WE SCREEN ALL PROSPECTIVE TENANTS. NO FEE TO LANDLORD.

COSTANTINE REALTY
289 FRANKLIN AVE NUTLEY, N.J.
REALTOR 667-7070

APARTMENTS WANTED
ATTENTION LANDLORDS!!

We have many qualified tenants that are screened and waiting for apartments or homes. You can choose that special tenant at no cost to you. For information call Tony Grande.

MARZULLI
264 Belleville Ave.
Bloomfield, N.J. 743-2306

COSTANTINE REALTY
REALTOR 667-7070

GOLD MARKET ANALYSIS CERTIFICATE

Bearer is entitled to a Market Analysis of his/her residential property by a Century 21 agent. Return this Certificate or call for an appointment.



HOMES R US
544 Washington Ave.
Belleville, N.J.
751-8800

Put Number 1 to work for you.™

<p>REAL ESTATE</p> <p>FOR RENT</p> <p>BELLEVILLE UNFURNISHED APARTMENT 2 FAMILY, 2ND FLOOR APT. MODERN 6 RMS. \$595. PLUS UTILITIES. AVAILABLE NOW. 1ST. ADULTS PREFERRED. NO PETS. BROKER 667-9115 HANCOK REALTY</p> <p>NUTLEY FURNISHED APARTMENT MODERN 4 ROOM AVAILABLE OCT. 1ST. ONE MATURE BUSINESS FEMALE PREFERRED. NO PETS. \$450 INCLUDES ALL UTILITIES. BROKER 667-9115 HANCOK REALTY</p> <p>BELLEVILLE 2 1/2 bdrm Cncls. \$725. Supply own util. Avail. immed. 3 rms. \$450 + util. Avail. immed.</p> <p>PATRICIAN ASSOCIATES 249 Franklin Ave. Nutley REALTOR 284-0900</p> <p>MONTELL AGENCY 759-6900</p> <p>REAL ESTATE</p> <p>FOR SALE</p> <p>BELLEVILLE JUST LISTED - DON'T MISS IT! Convenient, spacious, efficient modern, 25 year old Colonial, near transportation, schools & shopping. New kitchen, powder room, living room, dining room, 3 large bedrooms, hardwood floors, finished basement with one-half bath, built in garage, large private yard. Excellent core-to-me right in owner's transferred. Motivated to sell \$119,500. MTC-8505.</p> <p>WEICHERT CO. REALTORS 272 Belleville Ave. Upper Montclair, N.J.</p> <p>LOT FOR SALE RESIDENTIAL NUTLEY PARK, 5' 150' Call! 759-6976 or 661-3099</p> <p>KENDRICK REALTY, INC. 31 High St., Nutley 667-5500</p>	<p>FOR SALE</p> <p>NUTLEY SPACIOUS COLONIAL This well kept 7 rm COLONIAL offers secluded fenced in back yard. Along with 3 lge. bedrooms, extra lge. closet, formal dining rm., living rm. mod. eat in k. 2 mod. baths. Central air. Fin. basement. Attached garage. Under ground sprinkler system. Other extras too many to mention. Move in condition. Asking low 130's. For appt. call! 667-8513</p> <p>BELLEVILLE 2 FAMILY HOUSE FOR SALE BY OWNER ON 50 x 130 LOT In prime residential location. One way street. Near schools, bus lines, & shopping. 2 separate gas units. All alum. exterior, with storm. Enclosed front porch. 1st fl. 5 rms with mod. bath. 2nd fl. all mod. kit, mod. bath, dining room on 2nd with large attic. Long paved driveway. New 10 x 14 storage shed. Priced at \$119,900. Call for appt. 759-6442</p> <p>BLOOMFIELD FAMILY LIVING This spacious Colonial is a lot of home for the money. First floor features include living room, dining room, family room and eat-in kitchen with breakfast room. 2nd floor has 3 bedrooms, 2 full baths, 3rd fl. extra bdrm. Fin. rm. a block from school & N.Y. bus. Owner transferred. Offered at \$89,900. MTC-8471.</p> <p>WEICHERT CO. REALTORS Upper Montclair, N.J.</p> <p>ARCHITECTURE & PLANNING HOME & BUILDING INSPECTIONS KENNETH J. STOVACK, AIA REGISTERED N.J. ARCHITECT 661-7708</p> <p>NUTLEY-NEW LISTING TUDOR COLONIAL, Spivia Gardens, this charming well kept home offers chestnut trim, frpl, mod kit with breakfast room, screened porch, lg fam rm, 2 full baths, 3 bdrms with space on 3rd fl. extra bdrm. Fin. rm. a block from school & N.Y. bus. Owner transferred. MUST SELL!</p> <p>CUSTOM RANCH - Near park, Tannery area - set back for privacy & perfect for the small family. Frpl in liv. rm. lg din rm, 1 1/2 baths, 2 bdrms & den. ONE OF A KIND! REALTOR</p> <p>KENDRICK REALTY, INC. 31 High St., Nutley 667-5500</p>	<p>FOR SALE</p> <p>BELLEVILLE TWO FAMILY JUST LISTED Be the first to see this 4 over 2 two family with separate cell. Affix a possible 3rd unit. Property is zoned for 3 family. Owner asking \$110,000. Since 1917 EUGENE J. Reilly's Real Estate Insurance 759-1602</p> <p>BELLEVILLE TOWN HOUSE LUXURY Beautifully maintained, 8 month old town house with Italian tile foyer, central air cond., attached garage, family room with fireplace, well appointed kitchen with balcony, master bedroom with bath. Convenient to shopping, Unit course and all transportation \$129,900. MTC-8383 WEICHERT CO. REALTORS Upper Montclair, N.J.</p> <p>NUTLEY TAKE A LOOK GREAT STARTER HOME 6 room Colonial, Eat-in kitchen, fireplace in living room, dining room, 3 bedrooms. Quiet street. Priced to sell in low 80's. CARL A. ORECHIO AGCY 667-7733 Eves: Mario 667-8189</p> <p>FURNISHED ROOMS</p> <p>SLEEPING ROOM Kt. priv. Share bath & TV rm. Newly painted & decorated. Mature woman or medical student preferred. Call 482-4442 or 485-0699 after 6pm. 4 ROOM APT. AVAIL. ALSO.</p> <p>WANTED TO RENT</p> <p>GARAGE WANTED FOR RENTAL IN NUTLEY PLEASE CALL 667-1877 or 744-3109</p> <p>BOARDING</p> <p>SENIOR CITIZENS Live in comfort without fear Living accommodations. Excel. food, residential community. Rate from \$425 mo. for room, call & laundry. 484-3676</p>
---	---	--

<p>FOR SALE</p> <p>NUTLEY 2 FAMILY Custom brick, 1st floor, 3 bdrms, liv. rm., din area, ultra mod kit & bath. 2nd floor, 2 bdrms, lg. ex. mod. bath. Fin. basement with full bath. Asking \$159,900.</p> <p>SPRING GARDEN Just listed - recently renovated, 4 bdrm Colonial. Brand new from top to bottom. Choice of kit cab. & bathroom tile still pos. \$154,900.</p> <p>NUTLEY NEW LISTING 3 bdrm expanded Cape. Mod. kit, mod. bath, full bath. Extra lg lot. Asking \$124,900.</p>	<p>FOR SALE</p> <p>INVESTMENT PROPERTIES</p> <p>BELLEVILLE 7 Units, 5 rm apts. 2 four rm apts. 3 stories. On busy street. Brick construction. Asking \$225,000. Owner will hold mg for qual. buyer.</p> <p>NUTLEY Remodeled in & out, 3 m of tice & 3 rm apt on 1st 4 rm apt on 2nd & 3rd. Excellent opportunity for professional. Asking \$195,000.</p> <p>NUTLEY BUILDING LOT! One family rm. eval area. Plam avail. Asking \$42,500.</p>
--	--

PATRICIAN ASSOCIATES
249 Franklin Avenue, Nutley
REALTOR 284-0900

THE TIME IS RIGHT
Location is great. Owner is anxious and this 6 room, 1 1/2 bath Colonial is ready for a new family. A couple of nice extras makes this one of our better buys. Seller open to offers.

EVERYONE KNOWS
GEORGE T. BOWES
YOUR NUTLEY REALTOR SINCE 1933
681 FRANKLIN AVE., NUTLEY 667-3376

<p>BELLEVILLE HANDYMAN SPECIAL 22 HECKEL STREET 6 rms, 1 1/2 mod baths, new gas heat, 220 elec, excellent starter home & vacant. Priced for quick sale. \$61,900.</p>	<p>BLOOMFIELD \$69,900 Look at 31 Olive Street, BRICK COLONIAL 7 rms with country kitchen & mod. bath. Widow must sell.</p>
<p>BLOOMFIELD EXPANDED CAPE NEW LISTING-Liv rm, din rm, mod kit, mod bath, 2 bedrooms on 1st level, 2 lg bdrms 2nd level. New oil heat & 220 elec. Asking \$70's for quick sale.</p>	<p>BLOOMFIELD 5 BEDROOMS COLONIAL-Facing park-Liv rm with frpl, din rm, lg let, sun room, file bath, 2 car garage. House in move-in condition. Asking in \$80's.</p>

TO INSPECT CALL
ARTHUR L. GRUTT, REALTOR
GLENWOOD REAL ESTATE AGENCY
429-7380
905 Broad St., Bloomfield

SHERIFF'S SALE
SHERIFF COURT OF NEW JERSEY
SUPERIOR COURT OF NEW JERSEY
CHANCERY DIVISION, ESSEX COUNTY
DOCKET NO. F-015-84 THE FEDERAL NATIONAL MORTGAGE ASSOCIATION, a corporation, PLAINTIFF vs. WILLIAM H. STANLEY, et al. DEFENDANTS. Execution For Sale of Mortgaged Premises.

By virtue of the above stated writ of Execution, to me directed, I shall expose for sale by Public Auction, in SHERIFF'S OFFICE, Essex County Courts Building in Newark, on Tues. day the 25th day of September next at or near thirty P.M. (Preceding Time)

The property to be sold is located in the City of Newark in the County of Essex, and State of New Jersey.

Commonly known as: 141 Hanbury Avenue, Newark, New Jersey.

Tax Lot No. 69 or Block No. 3703
Dimensions of Lot (Approximately) 483 feet wide by 101 feet long.

Nearest Cross Street: Situate on the Northeastly side of Hanbury Avenue, 33433 feet from the Southeastly side of Maple Avenue.

A Complete description can be found in the Essex County Register's Office.

The approximate amount of the Judgment to be satisfied by sale in the sum of THIRTY-FOUR THOUSAND NINE HUNDRED THIRTY-NINE DOLLARS AND FIFTY-FIVE CENTS (\$34,939.55), together with the costs of this sale.

The Sheriff reserves the right to adjourn the sale from time to time as provided by law.

Newark, N.J. August 20, 1984

Surrogate's Notice
Dated September 10, 1984
Estate of ALFRED C. COLLINS, deceased
Pursuant to the order of NICHOLAS R. AMATO, Surrogate of the County of Essex, his day made on the application of the undersigned, Administrator of said deceased, notice is hereby given to the creditors of said deceased to exhibit to the subscriber, under oath or affirmation, their claims and demands against the estate of said deceased within six months from this date. If they will be forever barred from prosecuting or recovering the same against the subscriber.

George J. Minich
Minich and Williams
P.O. Box 236
West Orange, N.J.
Attorneys
The Nutley Sun
September 20, 1984
Fee: \$5.00

No. B84-357

Second Big Week of ShopRite's

BIG BRAND BASH!



Duncan Hines
Choc. Chip Cookies
ALL VARIETIES
12-oz. bag
.99

Duncan Hines
Cake Mix
1-lb. 2-lb. oz. box
.69

Star-Kist Light Tuna
AS SEEN ON TV
6 1/2-oz. can
.69

Mott's Apple Sauce
OCEAN SPRAY PINEAPPLE OR WHITE OR PINK
1-lb. 3-oz. jar
.59

Grapefruit Juice
ALL VARIETIES
1-qt. 1-pt. btl.
.99

Jell-O Gelatins
WHY PAY MORE™
3-3-oz. boxes
1.00

RealLemon Lemon Juice
REGULAR OR PLUS, SACRAMENTO
1-qt. 14-oz. can
.99

Tomato Juice
1-qt. 14-oz. can
.69

The Dairy Place
100% PURE
Citrus Hill
Orange Juice
1/2-gal. cart.
1.59

USDA'S
American Singles
12-oz. pkg.
1.29

QUARTERS
Parkay Margarine
1-lb. box
.69

BREAKFAST OR LIGHT N' LIVELY
Cottage Cheese
24-oz. pkg.
1.49

The Fish Market
FRESH, WEST COAST GRADE 'A'
Filet of Dover Sole*
1-lb.
2.69

SWEET & TENDER FRESH GRADE 'A'
Small Scallops*
1-lb.
2.39

FROZEN & THAWED SALAD READY
Sea Legs Supreme
1-lb.
3.99

FROZEN & THAWED, 41-50 PER POUND
Medium Shrimp
1-lb.
4.89

The Frozen Food Place
ALL VARS. PEPPERIDGE FARM
Layer Cakes
17-oz. pkg.
1.49

ALL VARIETIES
Freezer Queen Entrees
2-lb. pkg.
1.59

HUNGRY MAN WHITE OR DARK CHICKEN TOPIKE
Swanson Dinners
15.25-oz. pkg.
1.99

ASSORTED FLAVORS
Oreo Ice Cream
1/2-gal. cart.
2.29

Health & Beauty Aids

REG. (4.5-0Z) OR WINTER FRESH
Colgate Pump Toothpaste
each
1.19

STAYFREE SILHOUETTES
REGULAR, HARD TO HOLD, SUPER HOLD UNCRACKED OR REGULARLY CRACKED
9-oz. can
.99

ShopRite Coupon
WITH THIS COUPON ONE 11.0Z PKG. OF AMERICAN
278

AMERICAN
Dorman's Singles
12-oz. can
.99

Coupon good at any ShopRite Market. Limit one per family. Effective Sun. Sept. 16 thru Sat. Sept. 22, 1984.

SAVE .30

Prince Spaghetti or Elbow Macaroni
REG. OR THIN
3-lb. boxes
3.100

WHY PAY MORE™
Libby's Corned Beef
12-oz. can
.99

CREAMY OR CHUNKY, SKIPPY
Peanut Butter
1-lb. 2-oz. jar
1.29

WHY PAY MORE™
Smucker's Grape Jelly
3-lb. jar
.99

WHY PAY MORE™
Kraft Mayonnaise
1-qt. jar
1.59

REGULAR OR NATURAL
Lincoln Apple Juice
1/2-gal. jar
.89

AUNT JEMMA, ORIGINAL
Pancake Mix
2-lb. box
.79

BRK PKF COFFEE
Chock Full O' Nuts
1-lb. box
1.99

The MEAting® Place

WHOLE OR HALF, UNTRIMMED BEEF LOIN, 20-LB. AVG.
Shells Of Beef
USDA CHOICE
lb.
1.97

WITH TAIL BONE-IN BEEF LOIN
USDA CHOICE
lb.
2.97

FROM FRESH BUTT
Boneless Pork Roast
1-lb.
1.39

RIB CUT
Center Cut Pork Chops
1-lb.
1.97

LOIN PORTION, 9-11 CHOPS
Pork Chop Combo
1-lb.
1.47

MEATY RIB PORTION
Pork Loin For BBQ
1-lb.
1.57

RIB PORTION ROAST
Boneless Pork Loin
1-lb.
2.37

SCHICKAWA SHOULDER (WATER ADD)
Smoked Pork Butts
1-lb.
1.99

The Produce Place

LARGE 6 SIZE
Honeydew Melons
each
.89

THE NATURAL SNACK
Red Grapes
U.S. #1 GRADE
1-lb.
.59

Russet Potatoes
5-lb. bag
.99

ITALIAN
Prune Plums
1-lb.
.49

FRESH CRISP
Pascal Celery
stalk
.49

ShopRite Coupon
WITH THIS COUPON ONE 11.0Z PKG. OF
275

NEWMAN'S OWN
Marinara Sauce
1-lb. jar
1.79

Coupon good at any ShopRite Market. Limit one per family. Effective Sun. Sept. 16 thru Sat. Sept. 22, 1984.

SAVE .20

PEPSI FREE, REG. DIET OR LIGHT
Pepsi Cola or Mountain Dew
2-lb. btl.
.89

WHY PAY MORE™
Heinz Keg O' Ketchup
2-lb. btl.
.99

REG. OR HOMESTYLE, FINE, MED. OR BROAD
Penn Dutch Noodles
1-lb. 8-oz. jar
.69

ROKEACH, MOTHERS OR MANISCHWITZ
Gefilte Fish
1-lb. 8-oz. jar
1.99

LUVS
Diapers
ALL VARIETIES, 4-PK. BATHROOM
box
7.99

CHARMIN
Tissue
400-ct. box
1.09

POPE
Imported Tomatoes
1-lb. 12-oz. can
.59

ALL VARIETIES
Cycle Dog Food
3-14-oz. cans
1.00

The Deli Place

MEAT OR BEEF
Oscar Mayer Bologna
1-lb. pkg.
1.59

JOHN MORRELL
Canned Ham
5-lb. can
7.99

SLICED
Smithfield Bacon
1-lb. pkg.
1.29

HEBREW NATIONAL
Franks or Knocks
12-oz. pkg.
1.99

The Appy Place

STORE SLICED U.S. A. CHOICE
Cooked Roast Beef
1/2-lb.
.99

STORE SLICED
Cooked Pastrami
1/2-lb.
.99

ALL VARIETIES
ShopRite Loaves
1/2-lb.
.99

STORE SLICED
White's Liverwurst
1-lb.
.99

The Family Pharmacy Dept.

Description	Size	Price
(Betamethasone Valerate Cream) R	15 gm	\$8.99
* Valisone Cream 0.1%		
* Betamethasone Valerate 0.1% Cream	15 gm	\$5.99
* Mycolog Cream	15 gm	\$9.49
* Nystatin-Neomycin Gramicidin Cream	15 gm	\$4.99
* Hytione Cream	30 gm	\$6.39
* Hydrocortisone Cream	30 gm	\$2.99
* Mycostatin Cream	30 gm	\$15.49
* Nystatin Cream	30 gm	\$3.99

* Requires prescription. These prescription prices are effective Thursday, September 20 thru Saturday, September 22, 1984 in any ShopRite Supermarket with a ShopRite Pharmacy Dept. Quantities less than those listed may be priced slightly higher.

SEE THE HIGH QUALITY OUR LOW PRICES CAN BUY

In order to assure a sufficient supply of sales items for all our customers, we must reserve the right to limit the purchase to units of 4 of any sales items, except where otherwise noted. Not responsible for typographical errors. Prices effective Sun. Sept. 16 thru Sat. Sept. 22, 1984. None sold to other retailers or wholesalers. Artwork does not necessarily represent item on sale. It is for display purposes only. Copyright WAKEFERN FOOD CORPORATION 1984.